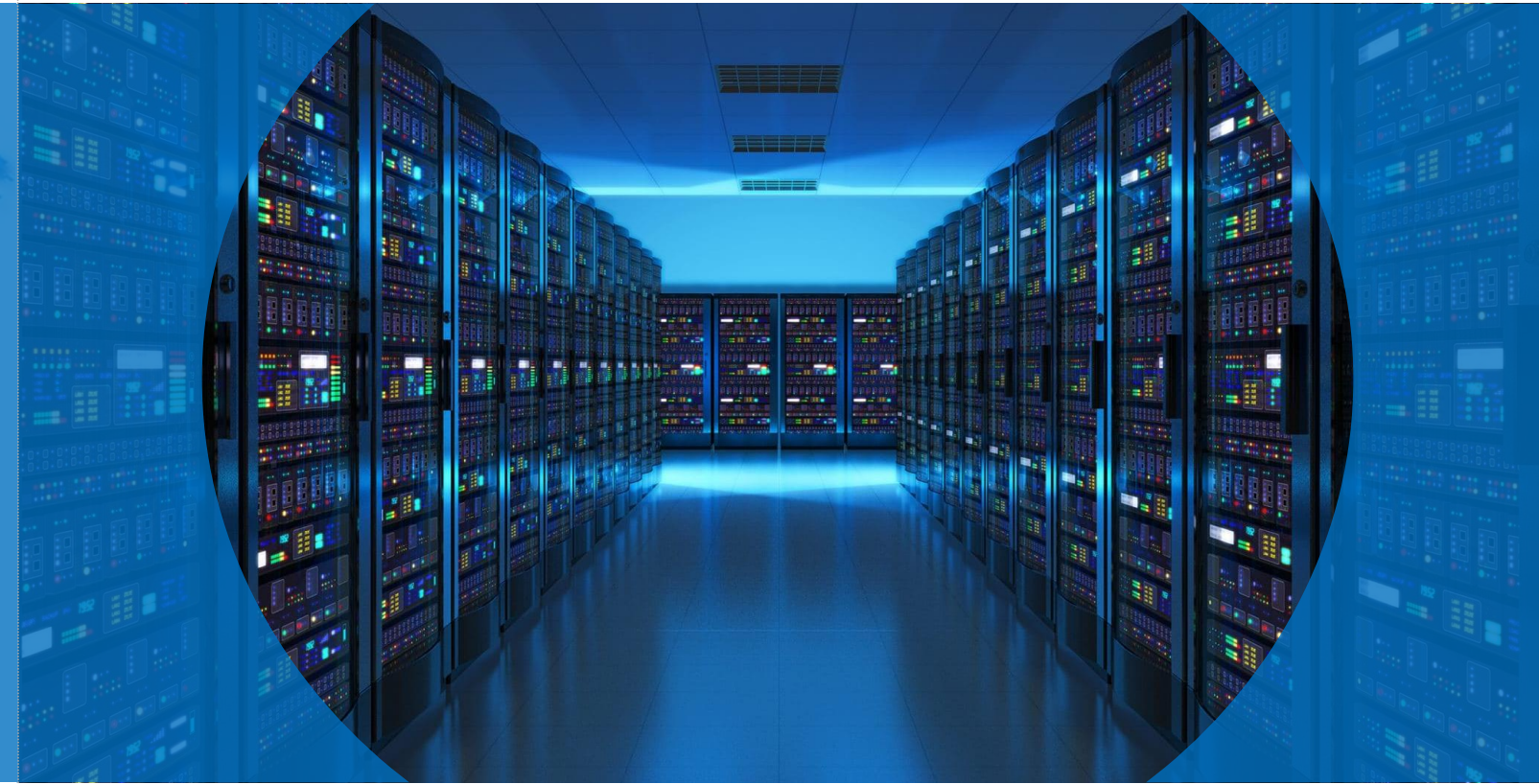


Gorelink Communications

Integrated Network Passive Solutions Manufacturer

Copper System | Fiber Optic Solution | Data Center | Data Transmission

Shenzhen,China | HongKong | United Kingdom | Qatar |
Colombia
Tel:86-755-89320995 | www.gorelink.com | Email:sales@gorelink.com



Verified Supplier in
global sources



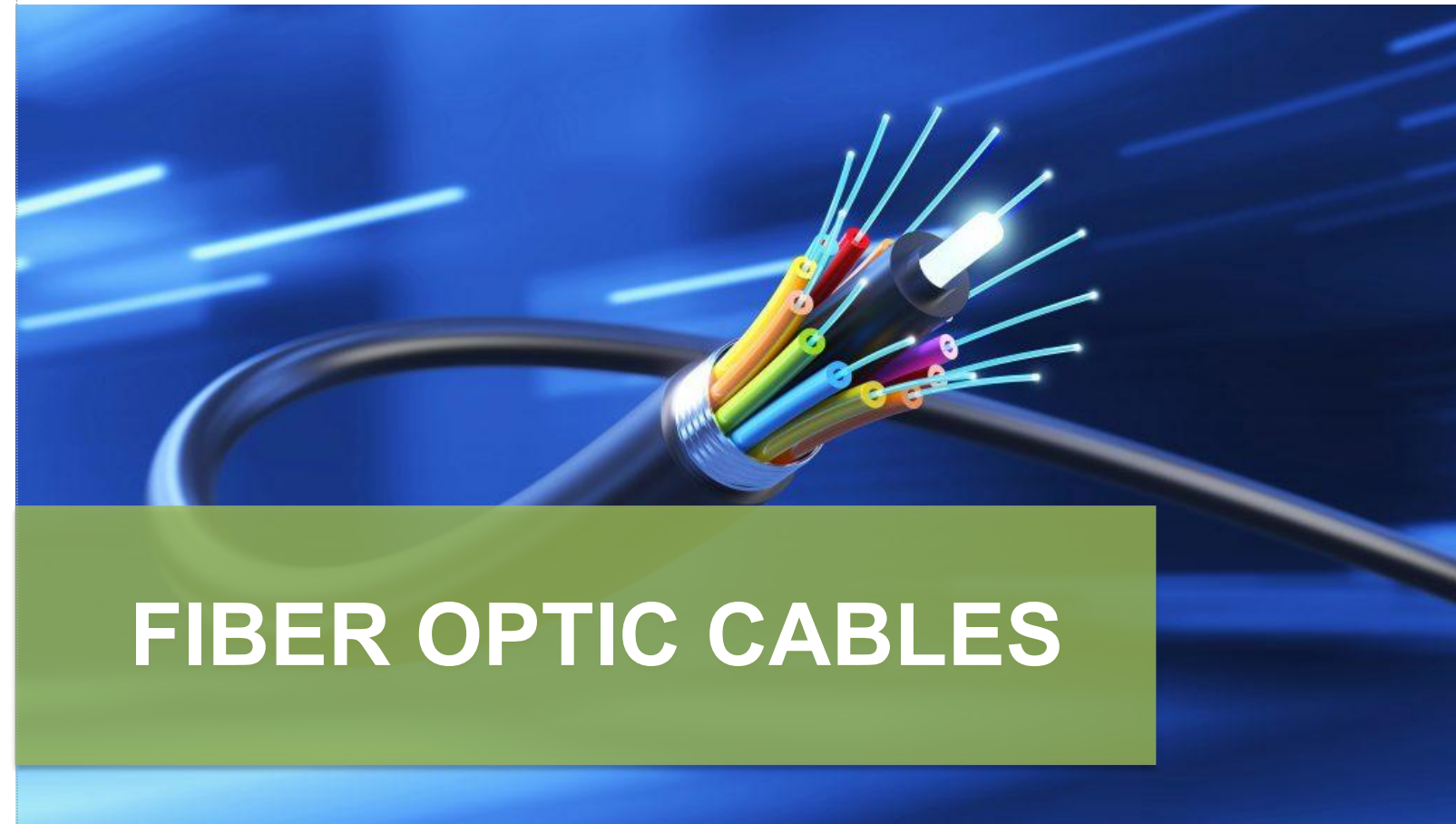
Fiber Optic System

CONTENTS

2-24 cores outdoor cable, Central loose tube, steel tape Armored, GYXTW	1-2
2-144 cores outdoor Non-metallic cable, Stranded loose tube, Glass yarn,FRP member,GYFTY	3
2-288 Cores outdoor cable, Stranded loose tube, Armored, with metallic strength member,GYTS	4
2-288 Cores outdoor cable, Stranded loose tube, Armored, with metallic strength member,GYTA	5
2-288 Cores outdoor cable, Stranded loose tube, Double Armored, metallic member,GYTY53	6
2-288 Cores outdoor cable, Stranded loose tube, Double Armored, metallic member,GYTA53	7
2-24 Cores outdoor Figure-8 Self-Supporting Fiber Cable,with wire messenger,GYXTC8S	8
2-24 Cores Indoor/Outdoor Cables, Central loose tube	9
2-96 Cores All Dielectric-Self Supporting Cable, ADSS	10
2-12 Cores FTTH Drop cables	11-12
2-48 Cores Indoor Distribution Cables	13
2-24 Cores Indoor Breakout Cables	14

Standard Fiber Optic Patch Cords	15-19
Armored Fiber Optic Patch Cords	20
Fiber Optic Pigtaills	21-22
Drop Patch Cords/CPRI Patch Cord/Fiber cable reels	23-26
Fiber Optic Connectors/Adapters/Attenuators	27-32
MPO/MTP Solutions Products	33-36

Fiber Rack Mounted Patch Panels	37-38
Fiber Wall Mounted Box	39-42
FTTH Terminal Boxes/Fiber Distribution Boxes	43-46
Fiber Optic Splice Closures	47-48
PLC Splitters	49-50
Fiber Optic Tools & Toolkits	51-54



FIBER OPTIC CABLES

FIBER PARAMETERS

SINGLE-MODE FIBER TYPES

Fiber type ITU-IT		1310nm	1383nm	1410nm	1450nm	1490nm	1550nm	1625nm
G.652D	Standard single mode telecommunication fiber with zero water-peak attenuation	≤0.34	≤0.31	-	-	≤0.24	≤0.20	≤0.23
G.655 A,B,C,D	Long distance single mode fiber with non-zero dispersion shifted (NZDSF) for CWDM and DWDM system 10G and future 40G or 100G	-	≤0.40	≤0.32	≤0.26	-	≤0.19	≤0.21
G.657A1	Bend insensitive fiber fully compatible with G.652D standard, bend radius 10-15 mm	≤0.35	≤0.35	-	-	≤0.24	≤0.20	≤0.23
G.657A2	Bend insensitive fiber fully compatible with G.652D standard, bend radius 7.5 mm	≤0.35	≤0.35	-	-	≤0.24	≤0.20	≤0.23
G.657B3	Bend insensitive fiber fully compatible with G.652D standard, bend radius 5 mm	≤0.35	≤0.35	-	-	≤0.24	≤0.20	≤0.23

MULTIMODE FIBER TYPES

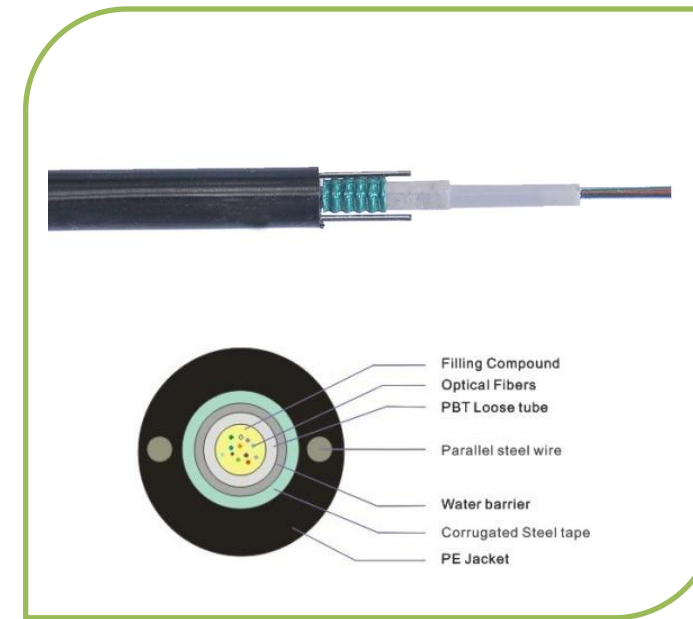
Fiber type ITU-IT	Overfilled modal bandwidth [MHz/km]		Link Lengths (m)			Attenuation [dB/KM]		Bending loss 2 turns[dB]	
	850nm	1300nm	1GBase-SR	10GBase-SR	40GBASE-SR4 /100GBASE-SR10	850nm	1300nm	Radius 7.5mm	
								850nm	1300nm
62.5/125 OM1	≥160	≥500	275	-	-	2.6	0.5	≥0.2	≥0.5
50/125 OM2 Bend insensitive	≥500	≥500	600	83	-	2.3	0.5	≥0.2	≥0.5
50/125 OM3 Bend insensitive	≥1500	≥500	1000	300	140	2.4	0.5	≥0.2	≥0.5
50/125 OM4 Bend insensitive	≥3500	≥500	1100	550	170	2.4	0.6	≥0.2	≥0.5

* Maximum cabled fiber attenuation 3.0 dB/km at 850 nm, maximum total connector loss of 1.0 dB and VCSELs maximum RMS spectral width of 0.29 nm.

Fiber Types

- **Tight 900 μm fiber**
Possibility to remove the 900 μm coat at the distance of 3-5 cm
- **Semi-tight 900 μm fiber**
Possibility to remove the 900 μm coat at the distance of 20-40 cm
- **Easy strip 900 μm fiber**
Possibility to remove the 900 μm coat at the distance from 100 cm to 200 cm

Central loose tube, Armored Outdoor Fiber cable GYXTW



Application

- ✓ Suitable for Duct, Aerial laying
- ✓ Widely used in FTTH access network
- ✓ Telecommunication Networks
- ✓ CCTV Networks
- ✓ Data communications Networks
- ✓ Local Area Networks

Features

- ✓ Up to 24 cores
- ✓ Fiber code: choice of SM/MM
- ✓ Central loose tube design
- ✓ Light weight & Reduced-Diameter
- ✓ Corrugated steel tape Single-Armored & parallel steel wire strength
- ✓ Good mechanical performance
- ✓ GYXTW

Cable Information

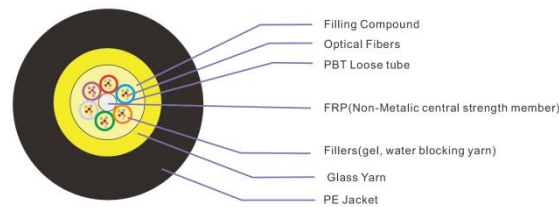
Fiber Count	2-24 cores			
Fiber Coloring	4C:blue/orange/green/ natural 6C:blue/orange/green/brown/grey / natural 8C:blue/orange/green/brown/grey / natural/red/black 12C:blue/orange/green/brown/grey/natural/red/black/yellow/purple/pink/Aqua 24C:same as 12C for one set of 12 colors and dots on another set of 12 colors			
Central Loose Tube Material	PBT			
Loose Tube Diameter	2-12 fiber	Φ2.10±0.1mm	24 Fiber	Φ3.0±0.1mm
Filling	Filling compound			
RipCORDS	2			
Aarmor	Corrugated Steel Tape			
Cable strength	2 parallel steel wire			
Sheath	PE or LSZH			
Cable Diameter	8.0-8.8mm±0.3mm			
Application	Duct, Aerial laying			

Ordering Information

P/N Coding: GL-GYXTW-902PE

P/N	Product	Fiber Type	Fiber Core	Jacket
GL- GYXTW	Central armored cable	9 SM G652D	02 2 core	PE PE
		9/657A SM G657A	04 4 core	L LSZH
		6 62.5/125um	06 6 core	
		5 50/125um	08 8 core	
		53 50/125um OM3	12 12 core	
		54 50/125um OM4	24 24 core	
		55 50/125um OM5		

Non-Metallic, Stranded loose tube Outdoor Fiber cable GYFTY



Application

- ✓ Suitable for Duct, Aerial laying
- ✓ Widely used in FTTH access network
- ✓ Telecommunication Networks
- ✓ CCTV Networks
- ✓ Data communications Networks
- ✓ Local Area Networks

Features

- ✓ Up to 144 cores
- ✓ Fiber code: SM/MM
- ✓ Stranded loose tube design with FRP strength member
- ✓ Non-metallic central strength member
- ✓ Glass yarn protection
- ✓ Good mechanical performance
- ✓ GYFTY

Cable Information

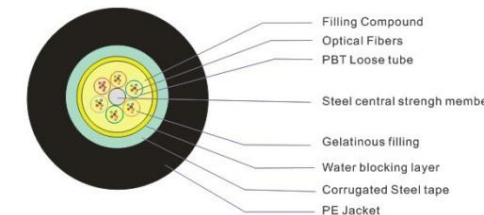
Fiber Count	2-144 cores
Fiber Coloring	4C:blue/orange/green/ natural 6C:blue/orange/green/brown/grey / natural 8C:blue/orange/green/brown/grey / natural/red/black 12C:blue/orange/green/brown/grey/natural/red/black/yellow/purple/pink/Aqua 24C:same as 12C for one set of 12 colors and dots on another set of 12 colors
Central Loose Tube	PBT
Loose Tube Diameter	Φ2.15 ±0.10mm
Filling	Filling compound
Strength	Aramid yarn
Structure	Non-metallic
Cable strength	FRP as central strength member
Sheath	PE or LSZH
Cable Diameter	10.5-15mm±0.5mm

Ordering Information

P/N Coding: GL-GYFTY-902PE

P/N	Product	Fiber Type	Fiber Core	Jacket				
GL-	GYFTY	Non-metallic	9	SM G652D	02	2 core	PE	PE
			9/657A	SM G657A	04	4 core	L	LSZH
			6	62.5/125um	06	6 core		
			5	50/125um	08	8 core		
			53	50/125um OM3	12	12 core		
			54	50/125um OM4	24	24 core		
			55	50/125um OM5	48	48 core		
					96	96 core		
					144	144 core		

Steel tape armor, Stranded loose tube Outdoor Fiber cable GYTS



Application

- ✓ Suitable for Duct, Aerial laying
- ✓ Widely used in FTTH access network
- ✓ Telecommunication Networks
- ✓ CCTV Networks
- ✓ Data communications Networks
- ✓ Local Area Networks

Features

- ✓ Up to 288 cores
- ✓ Fiber code: SM/MM
- ✓ Stranded loose tube design
- ✓ Metallic central strength member
- ✓ Corrugated Steel Tape armor
- ✓ Good mechanical performance
- ✓ GYTS

Cable Information

Fiber Count	2-288 cores
Fiber Coloring	4C:blue/orange/green/ natural 6C:blue/orange/green/brown/grey / natural 8C:blue/orange/green/brown/grey / natural/red/black 12C:blue/orange/green/brown/grey/natural/red/black/yellow/purple/pink/Aqua 24C:same as 12C for one set of 12 colors and dots on another set of 12 colors
Central Loose Tube	PBT
Loose Tube Diameter	Φ2.15 ±0.15mm
Filling	Filling compound
Armor	Corrugated steel tape
Structure	Single Armored
Cable strength	Metallic central strength member
Sheath	PE or LSZH
Cable Diameter	10.5-15.8mm±0.5mm

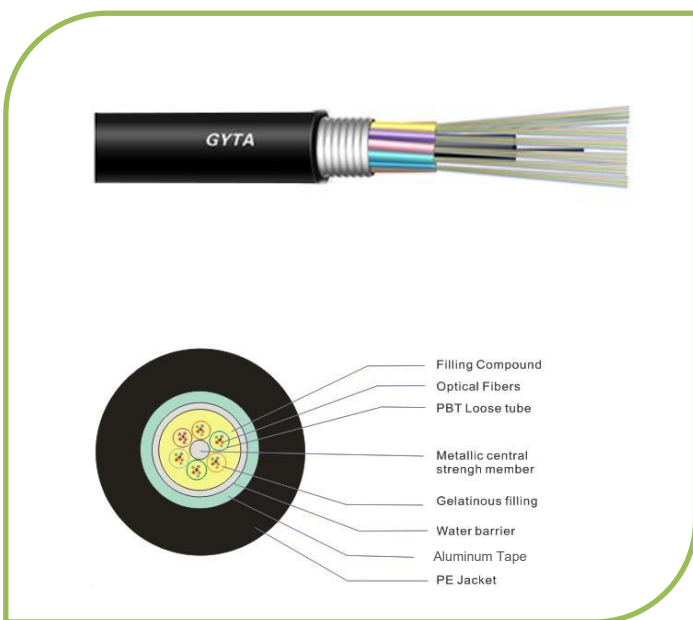
Ordering Information

P/N Coding: GL-GYTS-902PE

P/N	Product	Fiber Type	Fiber Core	Jacket				
GL-	GYTS	Single Armored	9	SM G652D	02	2 core	PE	PE
			9/657A	SM G657A	04	4 core	L	LSZH
			6	62.5/125um	06	6 core		
			5	50/125um	08	8 core		
			53	50/125um OM3	12	12 core		
			54	50/125um OM4	24	24 core		
			55	50/125um OM5	48	48 core		
					96	96 core		
					144	144 core		
					288	288 core		

LAP Armored, Stranded loose tube Outdoor Fiber cable GYTA

Double Sheath, Armored, Stranded loose tube Outdoor Fiber cable GYTY53



Application

- ✓ Suitable for Duct, Aerial laying
- ✓ Widely used in FTTH access network
- ✓ Telecommunication Networks
- ✓ CCTV Networks
- ✓ Data communications Networks
- ✓ Local Area Networks

Features

- ✓ Up to 288cores
- ✓ Fiber code: SM/MM
- ✓ Stranded loose tube design
- ✓ Aluminum Polyethylene Laminate(APL) armored
- ✓ Moisture-proof
- ✓ Metallic central strength member
- ✓ Good mechanical performance
- ✓ GYTA

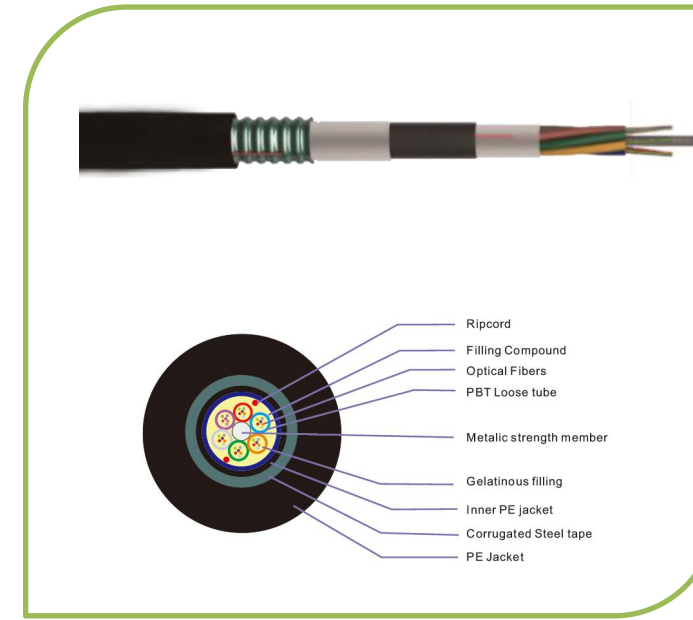
Cable Information

Fiber Count	2-288cores
Fiber Coloring	4C:blue/orange/green/ natural 6C:blue/orange/green/brown/grey / natural 8C:blue/orange/green/brown/grey / natural/red/black 12C:blue/orange/green/brown/grey/natural/red/black/yellow/purple/pink/Aqua 24C:same as 12C for one set of 12 colors and dots on another set of 12 colors
Central Loose Tube	PBT
Loose Tube Diameter	Φ2.15 ±0.10mm
Filling	Filling compound
Aarmor	Aluminum Polyethylene Laminate(APL)
Structure	Single armored
Cable strength	Metallic strength member
Sheath	PE or LSZH
Cable Diameter	10.5-15.8mm±0.5mm

Ordering Information

P/N Coding: GL-GYTA-902PE

P/N	Product	Fiber Type	Fiber Core	Jacket				
GL-	GYTA	Single Armored	9	SM G652D	02	2 core	PE	PE
			9/657A	SM G657A	04	4 core	L	LSZH
			6	62.5/125um	06	6 core		
			5	50/125um	08	8 core		
			53	50/125um OM3	12	12 core		
			54	50/125um OM4	24	24 core		
			55	50/125um OM5	48	48 core		
					96	96 core		
					144	144 core		
					288	288 core		



Application

- ✓ Suitable for Duct, Aerial laying, Direct Burial
- ✓ Widely used in Backbone network
- ✓ Telecommunication Networks
- ✓ CCTV Networks
- ✓ Data communications Networks
- ✓ Local Area Networks

Features

- ✓ Up to 288 cores
- ✓ Fiber code: SM/MM
- ✓ Stranded loose tube design
- ✓ Double sheath protection
- ✓ Corrugated Steel Tape armored
- ✓ PE inner Sheath
- ✓ Metallic central strength member
- ✓ Good mechanical performance
- ✓ GYTY53

Cable Information

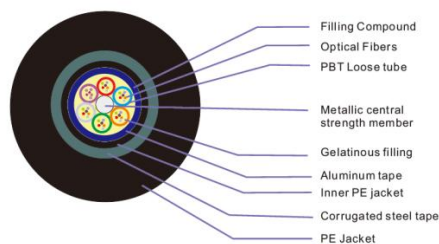
Fiber Count	2-288 cores
Fiber Coloring	4C:blue/orange/green/ natural 6C:blue/orange/green/brown/grey / natural 8C:blue/orange/green/brown/grey / natural/red/black 12C:blue/orange/green/brown/grey/natural/red/black/yellow/purple/pink/Aqua 24C:same as 12C for one set of 12 colors and dots on another set of 12 colors
Central Loose Tube	PBT
Loose Tube Diameter	Φ2.15 ±0.15mm
Filling	Filling compound
Aarmor	Corrugated steel tape
Structure	Single Armored+PE inner sheath
Cable strength	Metallic central strength member
Sheath	PE or LSZH
Cable Diameter	12-18.5mm±0.5mm

Ordering Information

P/N Coding: GL-GYTY53-902PE

P/N	Product	Fiber Type	Fiber Core	Jacket				
GL-	GYTY53	Double sheath	9	SM G652D	02	2 core	PE	PE
			9/657A	SM G657A	04	4 core	L	LSZH
			6	62.5/125um	06	6 core		
			5	50/125um	08	8 core		
			53	50/125um OM3	12	12 core		
			54	50/125um OM4	24	24 core		
			55	50/125um OM5	48	48 core		
					96	96 core		
					144	144 core		
					288	288 core		

Double Sheath, Armored, Stranded loose tube Outdoor Fiber cable GYTA53



Application

- ✓ Suitable for direct burial, duct laying
- ✓ Widely used in FTTH access network
- ✓ Telecommunication Networks
- ✓ CCTV Networks
- ✓ Data communications Networks
- ✓ Local Area Networks

Features

- ✓ Up to 144 cores
- ✓ Fiber code: GYTA53
- ✓ Stranded loose tube design with Metallic strength member
- ✓ Double sheath armored
- ✓ Corrugated Steel Tape armored+PE inner Sheath + Aluminum Tape
- ✓ Good mechanical performance
- ✓ GYTA53

Cable Information

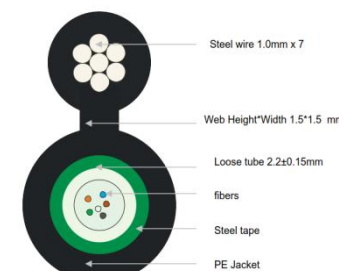
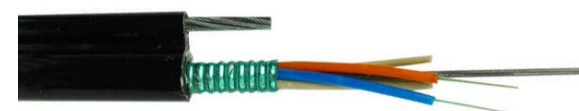
Fiber Count	2-144 cores
Fiber Coloring	4C:blue/orange/green/ natural 6C:blue/orange/green/brown/grey / natural 8C:blue/orange/green/brown/grey / natural/red/black 12C:blue/orange/green/brown/grey/natural/red/black/yellow/purple/pink/Aqua 24C:same as 12C for one set of 12 colors and dots on another set of 12 colors
Central Loose Tube	PBT
Loose Tube Diameter	Φ2.15 ±0.10mm
Filling	Filling compound
Aarmor	Aluminum Polyethylene Laminate(APL) +Steel tape
Structure	Double armored+PE Inner sheath
Cable strength	Metallic strength member
Sheath	PE or LSZH
Cable Diameter	12-18.5mm±0.5mm

Ordering Information

P/N Coding: GL-GYTA53-902PE

P/N	Product	Fiber Type	Fiber Core	Jacket				
GL-	GYTA53	Double sheath	9	SM G652D	02	2 core	PE	PE
			9/657A	SM G657A	04	4 core	L	LSZH
			6	62.5/125um	06	6 core		
			5	50/125um	08	8 core		
			53	50/125um OM3	12	12 core		
			54	50/125um OM4	24	24 core		
			55	50/125um OM5	48	48 core		
					96	96 core		
					144	144 core		

Figure-8 Self-Supporting Fiber cable GYXTC8S



Application

- ✓ Suitable for Aerial laying
- ✓ Widely used in Backbone network
- ✓ Telecommunication Networks
- ✓ CCTV Networks
- ✓ Data communications Networks
- ✓ Local Area Networks

Features

- ✓ Up to 24 cores
- ✓ Fiber code: SM/MM
- ✓ Stranded loose tube
- ✓ With messenger strength
- ✓ Corrugated Steel Tape armored
- ✓ Metallic central strength member
- ✓ Good mechanical performance
- ✓ GYXTC8S

Cable Information

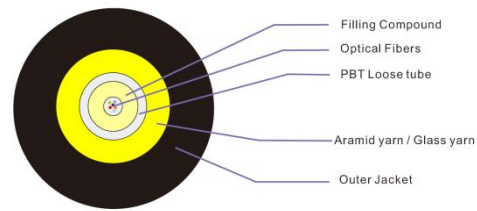
Fiber Count	2-24 cores
Fiber Coloring	4C:blue/orange/green/ natural 6C:blue/orange/green/brown/grey / natural 8C:blue/orange/green/brown/grey / natural/red/black 12C:blue/orange/green/brown/grey/natural/red/black/yellow/purple/pink/Aqua 24C:same as 12C for one set of 12 colors and dots on another set of 12 colors
Central Loose Tube	PBT
Loose Tube Diameter	Φ2.2 ±0.15mm
Filling	Filling compound
Aarmor	Corrugated steel tape
Structure	Single Armored
Cable strength	Steel wire messenger
Sheath	PE or LSZH
Cable Diameter	7.65*15.0±0.5mm

Ordering Information

P/N Coding: GL-GYXTC8S-902PE

P/N	Product	Fiber Type	Fiber Core	Jacket				
GL-	GYXTC8S	Self-supporting cable	9	SM G652D	02	2 core	PE	PE
			9/657A	SM G657A	04	4 core	L	LSZH
			6	62.5/125um	06	6 core		
			5	50/125um	08	8 core		
			53	50/125um OM3	12	12 core		
			54	50/125um OM4	24	24 core		
			55	50/125um OM5				

Non-Metallic, Central loose tube Indoor-Outdoor Fiber cable



Application

- ✓ Widely used in FTTH access network
- ✓ Telecommunication Networks
- ✓ CCTV Networks
- ✓ Data communications Networks
- ✓ Local Area Networks

Features

- ✓ Up to 24 cores
- ✓ Central loose tube design
- ✓ Light weight & Reduced-Diameter
- ✓ Aramid Yarn strength
- ✓ Good mechanical performance

Cable Information

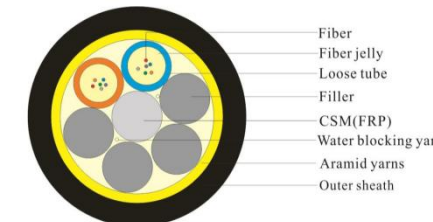
Fiber Count	2-24 cores
Fiber Coloring	4C:blue/orange/green/ natural 6C:blue/orange/green/brown/grey / natural 8C:blue/orange/green/brown/grey / natural/red/black 12C:blue/orange/green/brown/grey/natural/red/black/yellow/purple/pink/Aqua 24C:same as 12C for one set of 12 colors and dots on another set of 12 colors
Central Loose Tube	PBT
Loose Tube Diameter	Φ3.0 ±0.10mm
Filling	Filling compound
Structure	Central loose tube
Cable strength	Aramid yarn
Sheath	PE or LSZH or OFNR
Cable Diameter	6.0-6.8mm

Ordering Information

P/N Coding: GL-IO-902FR-YL

P/N	Product	Fiber Type	Fiber Core	Jacket	Color	
GL-IO	Indoor/Outdoor Cable	9	SM G652D	02	2 core	FR OFNR YL Yellow
		9/657A	SM G657A	04	4 core	PE PE OR Orange
		5	50/125um	06	6 core	L LSZH AQ Aqua
		53	50/125um OM3	08	8 core	BK Black
		54	50/125um OM4	12	12 core	Customized
		6	62.5/125um	24	24 core	

All Dielectric-Self Supporting Cable ADSS Single-Jacket



Application

- ✓ Widely used in Aerial Backbone network
- ✓ Telecommunication Networks
- ✓ CCTV Networks
- ✓ Data communications Networks
- ✓ Local Area Networks

Features

- ✓ Widely used for applications near high-voltage power distribution lines
- ✓ Large span more than 1000m
- ✓ Non-Metallic cable with aramid yarn strength
- ✓ Light weight and small size
- ✓ Resistance to lightning stroke and electromagnetic interference.
- ✓ Tested to meet or exceed TIA & GR-409-CORE standards

Cable Information

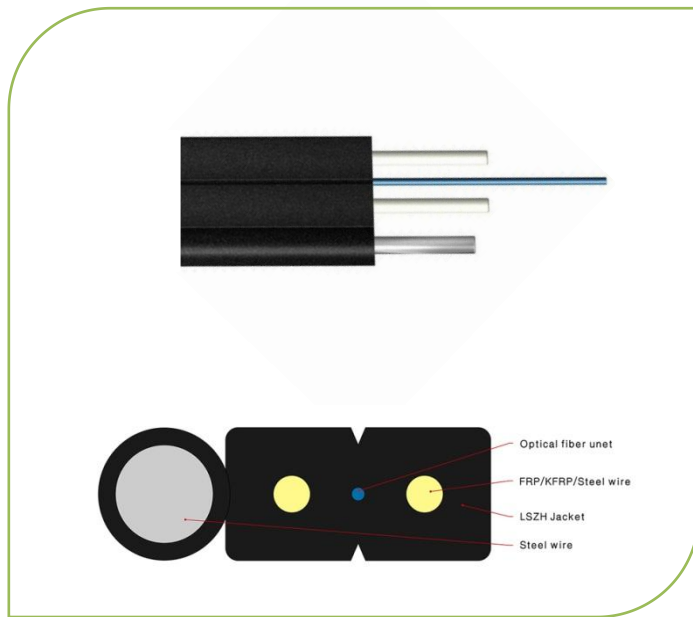
Fiber Count	Up to 96 cores
Fiber Coloring	4C:blue/orange/green/ natural 6C:blue/orange/green/brown/grey / natural 8C:blue/orange/green/brown/grey / natural/red/black 12C:blue/orange/green/brown/grey/natural/red/black/yellow/purple/pink/Aqua 24C:same as 12C for one set of 12 colors and dots on another set of 12 colors
Central Loose Tube	PBT
Loose Tube Diameter	Φ2.2 ±0.10mm
Filling	Filling compound
Structure	Stranded loose tube
Jacket	Single jacket
Cable strength	Aramid yarn
Sheath	PE or LSZH
Span(m)	100m
Cable Diameter	10.5-12.5mm

Ordering Information

P/N Coding: GL-ADSS-902PE50

P/N	Product	Fiber Type	Fiber Core	Jacket	Span	
GL-ADSS	ADSS cable	9	SM G652D	02	2 core	PE PE 50 50m
		9/657A	SM G657A	04	4 core	L LSZH 100 100m
		6	62.5/125um	06	6 core	150 150m
		5	50/125um	08	8 core	200 200m
		53	50/125um OM3	12	12 core	Customized
		54	50/125um OM4	24	24 core	
		55	50/125um OM5	48	48 core	
				96	96 core	

Outdoor FTTH Drop cable



Application

- ✓ Widely used in FTTH access network
- ✓ Telecommunication Networks
- ✓ Inside building
- ✓ Data communications Networks
- ✓ Local Area Networks

Features

- ✓ Up to 12 cores
- ✓ Two parallel FRP make good compression performance and protect the optical cable.
- ✓ Light weight & small Diameter
- ✓ Steel wire messenger as self-supporting
- ✓ Good mechanical performance

Cable Information

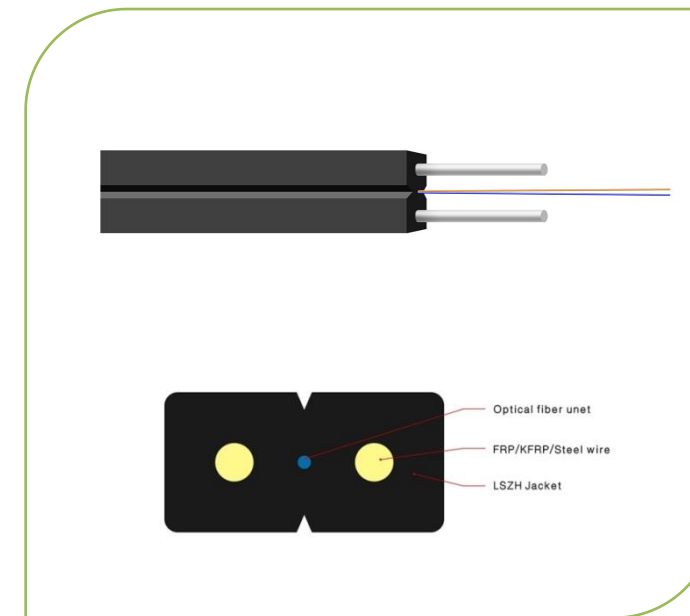
Application	Outdoor FTTH drop cable		
Cable structure	Fiber Reinforced Plastic (FRP) +steel wire messenger		
Outer diameter of color coating	250±15mm		
Diameter of Fiber	2 core	4 core/6 core	8 core/12 core
	2.0*5.0±0.2mm	2.0*5.0±0.2mm	2.0*5.6±0.2mm
Approx. weight	20KG	20KG	22KG
Minimum bending radius(mm)(No load)	10	10	10
Minimum bending radius(mm)(Under load)	20	20	20
Jacket	LSZH or OFNR		
Color	Black		

Ordering Information

P/N Coding: GL-DC02-902FRBK

P/N	Product	Fiber Type	Fiber Core	Jacket	Color				
GL-DC02	Aerial drop cable	9	SM G652D	02	2 core	FR	OFNR	BK	Black
		9/657A	SM G657A1	04	4 core	L	LSZH	WH	White
		6	62.5/125um	06	6 core				
		5	50/125um	08	8 core				
		53	50/125um OM3	12	12 core				
		54	50/125um OM4						
		55	50/125um OM5						

Indoor FTTH Flat Drop cable



Application

- ✓ Widely used in Backbone network
- ✓ Telecommunication Networks
- ✓ CCTV Networks
- ✓ Data communications Networks
- ✓ Local Area Networks

Features

- ✓ Widely used between wiring closets and equipment rooms
- ✓ Tested to meet or exceed TIA & GR-409-CORE standards
- ✓ Non-unitized tight-buffered distribution indoor cable
- ✓ Light weight and buffered to 900um for easy stripping and handling

Cable Information

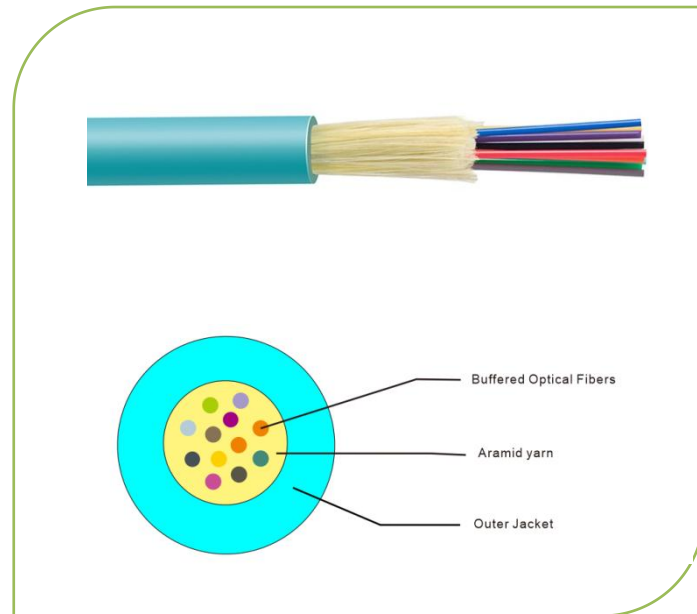
Application	Indoor flat drop cable		
Cable structure	Fiber Reinforced Plastic (FRP) +steel wire messenger		
Outer diameter of color coating	250±15mm		
Diameter of Fiber	2 core	4 core/6 core	8 core/12 core
	3.1±2.0mm	3.8±3.0mm	4.8±3.0mm
Approx. weight	10KG	14.5KG	16.0KG
Minimum bending radius(mm)(No load)	10	10	10
Minimum bending radius(mm)(Under load)	20	20	20
Jacket	LSZH or PVC		
Color	Black		

Ordering Information

P/N Coding: GL-DC01-902FRBK

P/N	Product	Fiber Type	Fiber Core	Jacket	Color				
GL-DC01	Flat drop cable	9	SM G652D	02	2 core	FR	OFNR	BK	Black
		9/657A	SM G657A1	04	4 core	L	LSZH	WH	White
		6	62.5/125um	06	6 core				
		5	50/125um	08	8 core				
		53	50/125um OM3	12	12 core				
		54	50/125um OM4						
		55	50/125um OM5						

Fiber Distribution Tight Buffer cable Up to 48 cores



Application

- ✓ Widely used in Backbone network
- ✓ Telecommunication Networks
- ✓ CCTV Networks
- ✓ Data communications Networks
- ✓ Local Area Networks

Features

- ✓ Widely used between wiring closets and equipment rooms
- ✓ Tested to meet or exceed TIA & GR-409-CORE standards
- ✓ Non-unitized tight-buffered distribution indoor cable
- ✓ Light weight and buffered to 900um for easy stripping and handling

Cable Information

Fiber Count	2-48 cores
Structure	0.9mm Tight buffer
Central Loose Tube	PBT
Loose Tube Diameter	Φ2.2 ±0.15mm
Strength	Aramid yarn
Sheath	PVC or LSZH or Riser or Plenum

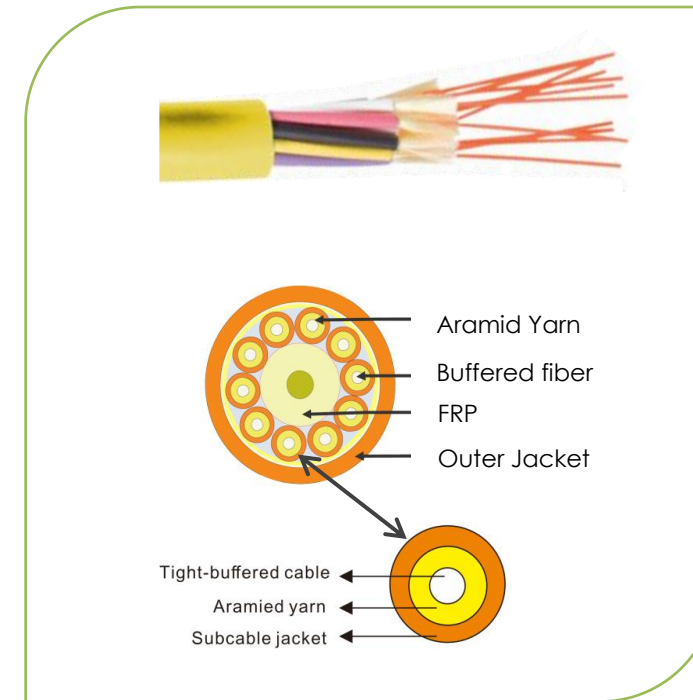
Fiber Count	4	6	8	12	24	48	
Outer Diameter(mm)	4.8±0.2	5.2±0.2	6.2±0.2	6.8±0.2	8.4±0.4	12.5±0.5	
Nomial Weight(KG/KM)	19	23	29	38	61	121	
Max. Tensile Strength(N)	Short-term	270	330	480	600	720	1600
	Long-term	90	110	160	200	240	520
Min. Bending Radius (mm)	Short-term	20D	20D	20D	20D	20D	20D
	Long-term	10D	10D	10D	10D	10D	10D
Max. Crush Resistance	1000	1000	1000	1000	1000	1000	

Ordering Information

P/N Coding: GL-FOC01-902PYL

P/N	Product	Fiber Type	Fiber Core	Jacket	Color				
GL-FOC01	Indoor Distribution Cable	9	SM G652D	02	2 core	P	PVC	YL	Yellow
		9/657A	SM G657A	04	4 core	L	LSZH	OR	Orange
		6	62.5/125um	06	6 core	FP	OFNP	AQ	Aqua
		5	50/125um	08	8 core	FR	OFNR	BK	Black
		53	50/125um OM3	12	12 core				Customized
		54	50/125um OM4	24	24 core				
		55	50/125um OM5	48	48 core				

Fiber Optic Breakout cable Up to 24 cores



Application

- ✓ Widely used in FTTH access network
- ✓ Data center
- ✓ Telecommunication networks
- ✓ CATV – Cable television
- ✓ Fibre-To-The-Home (FTTH)
- ✓ ODFs to Wall outlets, Wall outlets to Desk
- ✓ Connections between patch panels & boxes

Features

- ✓ Up to 24 cores
- ✓ 2.0mm Tight buffer cable
- ✓ Light weight & Reduced-Diameter
- ✓ Aramid Yarn strength
- ✓ Good mechanical performance

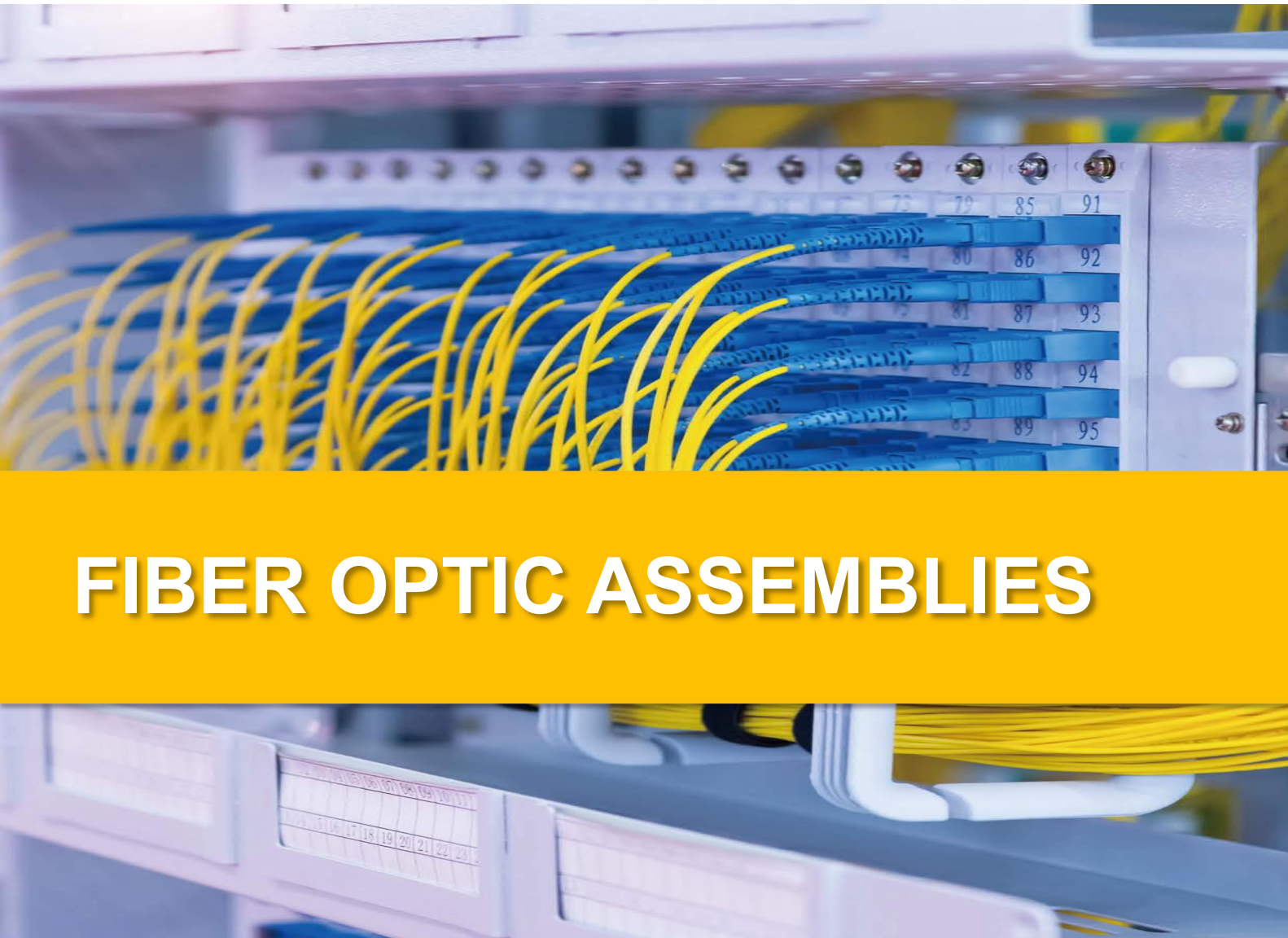
Cable Information

Product	Gorelink Indoor Breakout Cable
No. of Fibers	2-24 cores
Strength member	FRP
Type of cable	Tight buffer
Buffered cable	2.0mm Simplex
Outer Jacket	PVC or LSZH
Cable Diameter	9.0-12.5mm

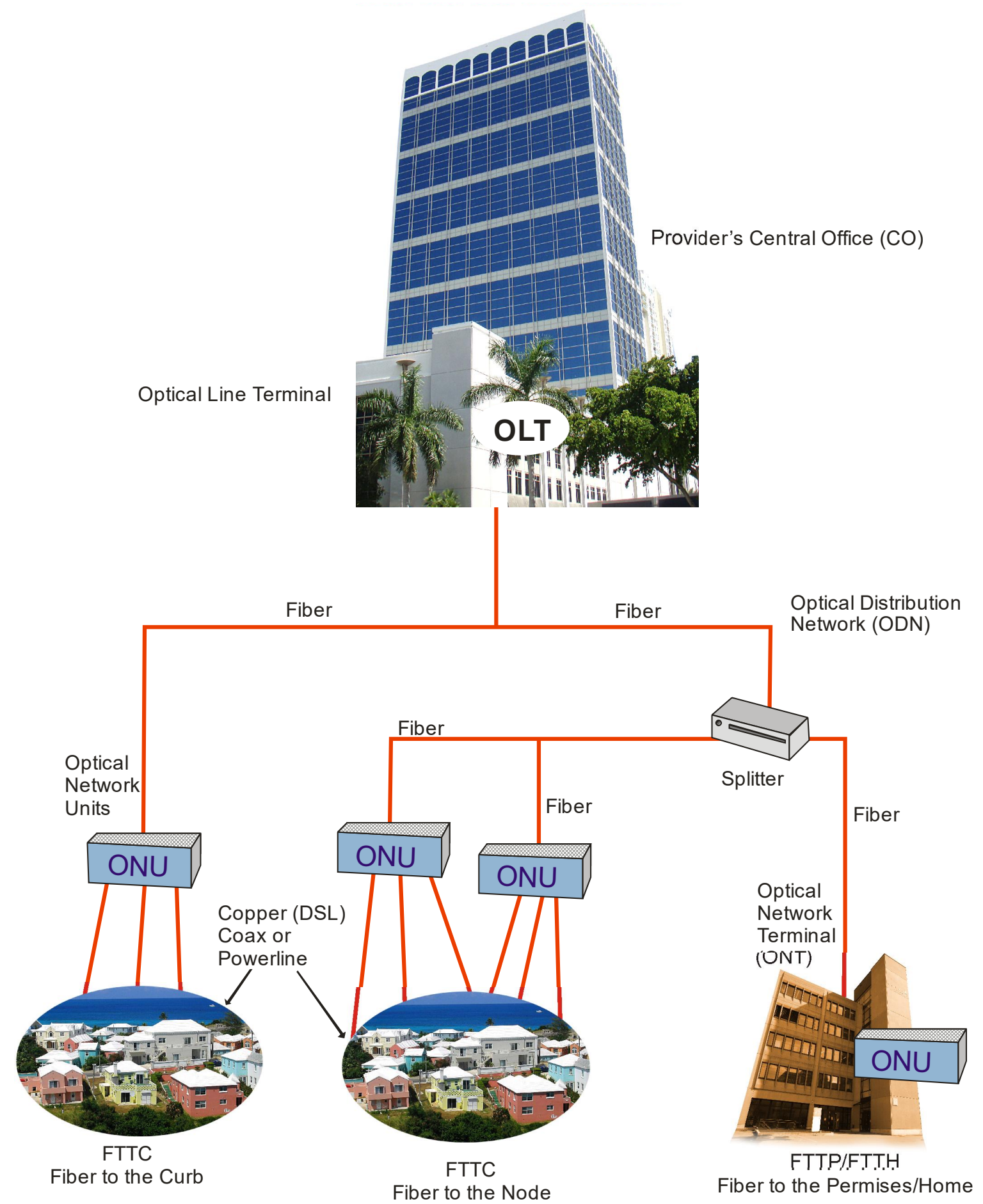
Ordering Information

P/N Coding: GL-FOC02-902PBK

P/N	Product	Fiber Type	Fiber Core	Jacket	Color				
GL-FOC02	Indoor breakout cable	9	SM G652D	02	2 core	P	PVC	BK	Black
		9/657A	SM G657A1	04	4 core	L	LSZH	OR	Orange
		6	62.5/125um OM1	06	6 core	FP	OFNP	YL	Yellow
		5	50/125um OM3	08	8 core	FR	OFNR	AQ	Aqua
		53	50/125um OM3	12	12 core				Customized
		54	50/125um OM4	24	24 core				
		55	50/125um OM5						



FIBER OPTIC ASSEMBLIES



FIBER OPTIC PATCH CORDS

Singlemode OS2 Series



LC/UPC-LC/APC



SC/UPC-SC/APC



FC/UPC-FC/APC



E2000/APC-E2000/APC



MTRJ/UPC-MTRJ/UPC



ST/UPC-ST/UPC



SC/APC-SC/APC



SC/APC-LC/UPC



Applications

- FTTH access network
- Telecommunication Networks
- CCTV Networks
- Local Area Networks
- Complies with IEC 61754-4, IEC 60784-14 and TIA 604-3 A push-pull coupling mechanism for easy insertion and consistent connection

Features

- Singlemode OS2 fiber patch cords
- Ideal for supporting high speed network connections and designed for gigabit Ethernet applications
- Low insertion loss and high return loss
- Attenuation at 1550nm: 0.25 dB/km
- Attenuation at 1310nm: 0.35 dB/km
- Polishing way: UPC/APC
- Connector :SC/LC/ST/FC/E2000/MTRJ etc
- Fiber mode: Singlemode OS2
- Choice of Simplex&Duplex
- O.D: 2.0/3.0mm
- Jacket: PVC or LSZH
- Choice of length and colors
- Choice of different connectors
- Operating Temperature: -20°C to +70°C
- RoHS Compliant

Ordering Information

P/N Coding: GL-PC9LCLCSX2P-1

P/N	Product	Fiber Type	Connector End A	Connector End B	Cable Structure	Cable Diameter	Cable Jacket	Cable Length							
GL-PC	Patch cord	9	G.652D	LC	LC/UPC	LC	LC/UPC	SX	Simplex	2	2.0mm	P	PVC	1	1Mtr
		9/657A	G.657A	LCA	LC/APC	LCA	LC/APC	DX	Duplex	3	3.0mm	L	LSZH	2	2Mtr
		9/655	G.655	SC	SC/UPC	SC	SC/UPC							3	3Mtr
				SCA	SC/APC	SCA	SC/APC							5	5Mtr
				FC	FC/UPC	FC	FC/UPC								Customized
				FCA	FC/APC	FCA	FC/APC								
				ST	ST/UPC	ST	ST/UPC								
				STA	ST/APC	STA	ST/APC								
				E2A	E2000/APC	E2A	E2000/APC								

FIBER OPTIC PATCH CORDS

Multimode OM1/OM2 Series

Applications

- FTTH access network
- Telecommunication Networks
- CCTV Networks
- Local Area Networks

Features

- ✓ Series are qualified at 850nm and 1300nm
- ✓ 100% tested to guarantee high performance
- ✓ Low insertion loss and high return loss
- ✓ Polishing way: UPC
- ✓ Installation Tensile Load: 100 N (445 lbs)
- ✓ Long-Term Tensile Load: 50 N (222 lbs)
- Connector :SC/LC/ST/FC/MTRJ etc
- Fiber mode: 50/125um or 62.5/125um
- Wavelength:850nm/1300nm
- Available in Simplex&Duplex
- O.D: 2.0/3.0mm
- Jacket: PVC or LSZH
- Choice of boot colors
- Choice of length and colors
- Operating Temperature: -20°C to +70°C
- RoHS Compliant



Ordering Information

P/N Coding: GL-PC5LCLCSX2P-1

P/N	Product	Fiber Type	Connector End A	Connector End B	Cable Structure	Cable Diameter	Cable Jacket	Cable Length							
GL-PC	Patch cord	5	50/125um	LC	LC/UPC	LC	LC/UPC	SX	Simplex	2	2.0mm	P	PVC	1	1Mtr
		6	62.5/125um	LCA	LC/APC	LCA	LC/APC	DX	Duplex	3	3.0mm	L	LSZH	2	2Mtr
				SC	SC/UPC	SC	SC/UPC							3	3Mtr
				SCA	SC/APC	SCA	SC/APC							5	5Mtr
				FC	FC/UPC	FC	FC/UPC								Customized
				FCA	FC/APC	FCA	FC/APC								
				ST	ST/UPC	ST	ST/UPC								
				STA	ST/APC	STA	ST/APC								
				E2A	E2000/APC	E2A	E2000/APC								

FIBER OPTIC PATCH CORDS

Multimode OM3 Series

Applications

- FTTH access network
- Telecommunication Networks
- CCTV Networks
- Local Area Networks

Features

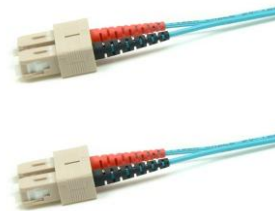
- Designed for 10Gigabit Ethernet applications
- Provides the Performance Headroom required to support LED, VCSEL laser light sources and 10 Gigabit Ethernet Applications
- Low insertion loss and high return loss
- Polishing way:UPC
- Connector :SC/LC/ST/FC/MTRJ etc
- Fiber mode: Multimode OM3
- Wavelength:850nm/1300nm
- Available in Simplex&Duplex
- O.D: 2.0/3.0mm
- Jacket: PVC or LSZH
- Choice of boot colors
- Choice of length and colors
- Operating Temperature: -20°C to +70°C
- RoHS Compliant



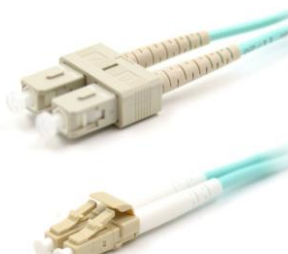
LC/UPC-LC/UPC



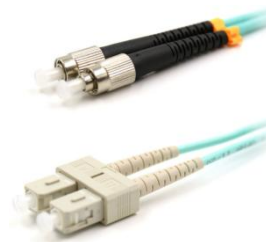
SC/UPC-SC/UPC



SC/UPC-SC/UPC



SC/UPC- LC/UPC



FC/UPC-SC/UPC



FC/UPC-ST/UPC

Ordering Information

P/N Coding: GL-PC53LCLCSX2P-1

P/N	Product	Fiber Type	Connector End A	Connector End B	Cable Structure	Cable Diameter	Cable Jacket	Cable Length	
GL-PC	Patch cord	53 OM3	LC	LC/UPC	SX	Simplex	2 2.0mm	P PVC	1 1Mtr
			SC	SC/UPC	DX	Duplex	3 3.0mm	L LSZH	2 2Mtr
			FC	FC/UPC					3 3Mtr
			ST	ST/UPC					5 5Mtr
									Customized

FIBER OPTIC PATCH CORDS

Multimode OM4 Series

Applications

- FTTH access network
- Telecommunication Networks
- CCTV Networks
- Local Area Networks

Features

- Multimode OM4 fiber patch cords
- High-speed Signal Transmission
- Optical Multimode (OM4) fiber supporting 2000 MHz.km EMB at 850 nm.
- 10 Gigabit transfers up to 300 meters using 850 nm VCSEL source
- Low insertion loss and high return loss
- 40 & 100 Gigabit Ethernet@ 850nm :150Mtr
- Wavelength:850nm/1300nm
- Polishing way: UPC
- Connector:SC/LC/ST/FC
- Fiber mode: Multimode OM4
- Choice of Simplex&Duplex
- O.D: 2.0/3.0mm
- Jacket: PVC or LSZH
- Choice of length and colors
- Operating Temperature: -20°C to +70°C
- RoHS Compliant



SC/UPC-SC/UPC Duplex



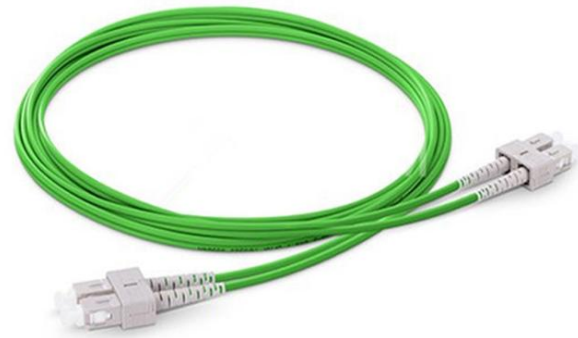
Ordering Information

P/N Coding: GL-PC54LCLCSX2P-1

P/N	Product	Fiber Type	Connector End A	Connector End B	Cable Structure	Cable Diameter	Cable Jacket	Cable Length	
GL-PC	Patch cord	54 OM4	LC	LC/UPC	SX	Simplex	2 2.0mm	P PVC	1 1Mtr
			SC	SC/UPC	DX	Duplex	3 3.0mm	L LSZH	2 2Mtr
			FC	FC/UPC					3 3Mtr
			ST	ST/UPC					5 5Mtr
									Customized

FIBER OPTIC PATCH CORDS

Multimode OM5 Series



SC/UPC-SC/UPC Duplex



LC/UPC-LC/UPC Duplex

Applications

- FTTH access network
- Telecommunication Networks
- Data center
- CCTV Networks
- Local Area Networks

Features

- Meets TIA-492AAAE and draft IEC 60793-2-10 A1a.4 requirements
- Completely backward compatible with existing OM4 networks and applications
- High-speed Signal Transmission
- Optical Multimode (OM5) fiber supporting 4700 MHz.km EMB at 850 nm.
- Low insertion loss and high return loss
- 40 Gigabit Ethernet@ 850nm:440Mtr
- 100 Gigabit Ethernet@ 850nm:150Mtr
- Wavelength:850nm/1300nm
- Polishing way: UPC
- Connector: SC/LC/ST/FC etc
- Fiber Grade: Bend Insensitive
- Fiber mode: OM5 50/125uM
- Choice of Simplex&Duplex
- O.D: 2.0/3.0mm
- Jacket: PVC or LSZH
- Jacket color: Lime Green
- Choice of length and colors
- Operating Temperature: -20°C to +70°C
- RoHS Compliant

Ordering Information

P/N Coding: GL-PC55LCLCSX2P-1

P/N	Product	Fiber Type	Connector End A	Connector End B	Cable Structure	Cable Diameter	Cable Jacket	Cable Length
GL-PC	Patch cord	55 OM5	LC LC/UPC	LC LC/UPC	SX Simplex	2 2.0mm	P PVC	1 1Mtr
			SC SC/UPC	SC SC/UPC	DX Duplex	3 3.0mm	L LSZH	2 2Mtr
			FC FC/UPC	FC FC/UPC				3 3Mtr
			ST ST/UPC	ST ST/UPC				5 5Mtr
								Customized

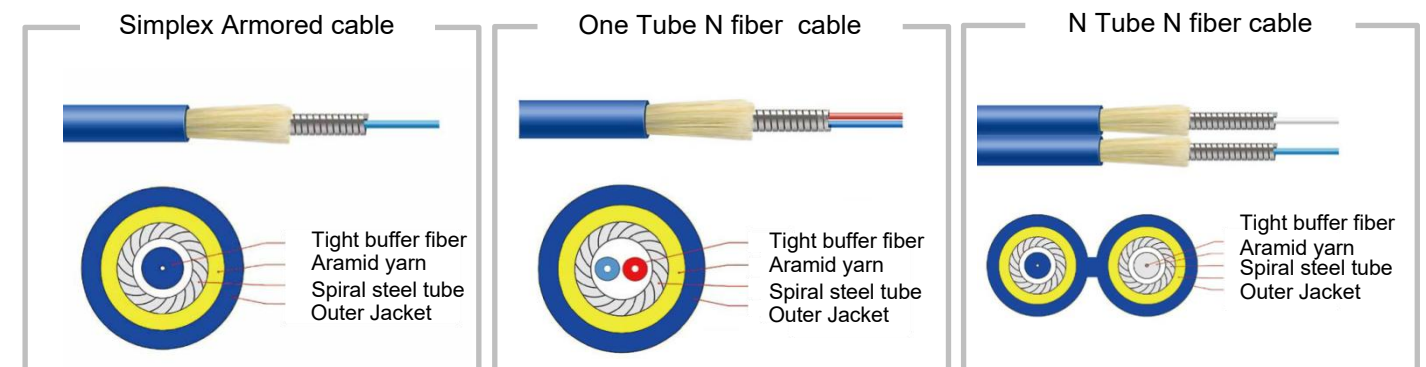
ARMORED FIBER PATCH CORDS

Applications

- ✓ Armored Patch cord can be used directly in different harsh environment without additional protection.
- ✓ The stainless steel tube prevents optic fiber from damage that improves stability of the system
- ✓ It is flexible, anti-rodent, pressure resistance.
- ✓ The structure is Anti-rodent ringed steel protection & External reinforced aramid yarn protection
- ✓ High quality tight buffered primary coating optical fiber
- ✓ Low Insertion loss and high return loss

Features

- ✓ Small bending radius, excellent mechanical and environmental performance
- ✓ Low insertion loss and high return loss
- ✓ Polishing way:UPC/APC
- ✓ Connector :SC/LC/ST/FC
- ✓ Fiber mode: SM,OM1/OM2/OM3/OM4
- ✓ O.D: 3.0mm
- ✓ Simplex/Multi-core available
- ✓ Jacket: PVC or LSZH
- ✓ Choice of length and colors
- ✓ Operating Temperature: -20°C to +70°C
- ✓ RoHS Compliant



LC/UPC-LC/UPC SM Simplex



LC/UPC-LC/UPC Multimode Duplex



LC/UPC-LC/UPC SM 6 Cores

Ordering Information

P/N Coding: GL-APC9LCLCSX2P-1

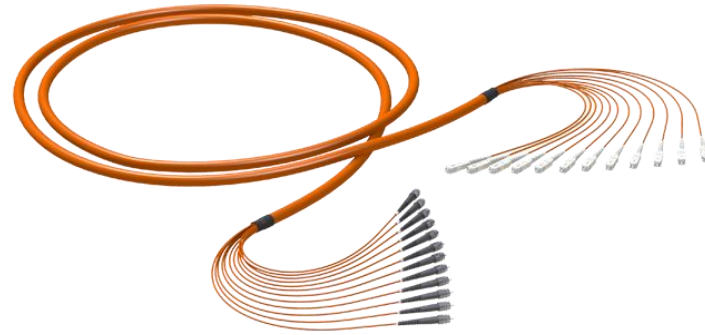
P/N	Product	Fiber Type	Connector End A	Connector End B	Cable Structure	Cable Diameter	Cable Jacket	Cable Length
GL-APC	Armored Patch cord	9 G.652D	LC LC/UPC	LC LC/UPC	SX Simplex	3 3.0mm	P PVC	1 1Mtr
		9/657A G.657A	LCA LC/APC	LCA LC/APC	DX Duplex		L LSZH	2 2Mtr
		5 50/125um	SC SC/UPC	SC SC/UPC	4 4 cores			Customized
		53 OM3	SCA SC/APC	SCA SC/APC	6 6 cores			
		54 OM4	FC FC/UPC	FC FC/UPC	8 8 cores			
			FCA FC/APC	FCA FC/APC				
			ST ST/UPC	ST ST/UPC				

MULTICORE FIBER PATCH CORDS

Pre-Terminated Series

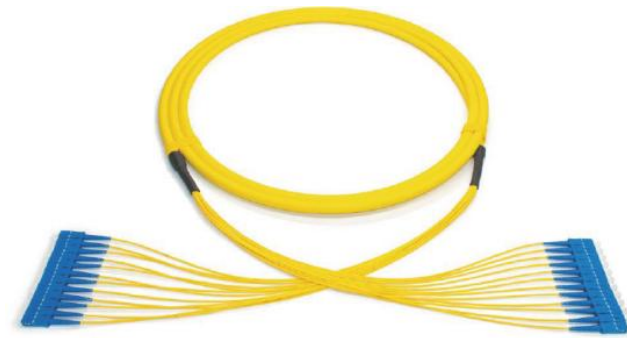
Applications

- FTTH access network
- Telecommunication Networks
- CCTV Networks
- Local Area Networks



Features

- The Breakout Style Multifiber assemblies are designed to reduce the complexity and operating cost of fiber optic networks by reducing the clutter from numerous individual fiber patch cords.
- Polishing way: APC, UPC
- Insertion Loss: ≤0.3 (PC); ≤0.2 (APC); ≤0.2 (UPC);
- Return Loss: ≥60 (APC); ≥55 (UPC);
- Fan-out can be φ0.9mm, φ2.0mm, φ3.0mm
- Fiber Mode: OS2 / OM1 / OM2/OM3 / OM4
- Connector: SC/LC/FC/ST
- Jacket: LSZH or PVC
- Fiber count: 2/4/6/8/12/24/48/72/144cores
- Choice of length and colors
- RoHS Compliant



Ordering Information

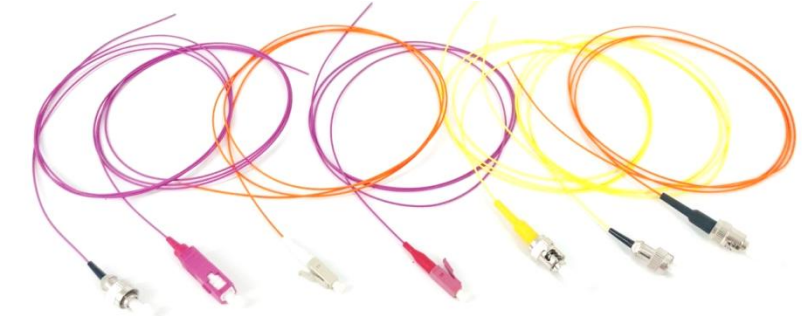
P/N Coding: GL-MPC9LCLCSX2P-1

P/N	Product	Fiber Type	Connector End A	Connector End B	Cable Structure	Cable Diameter	Cable Jacket	Cable Length							
GL-MPC	Multicore Patch cord	9	G.652D	LC	LC/UPC	LC	LC/UPC	SX	Simplex	As per the cable core	L	LSZH	1	1Mtr	
		9/657A	G.657A	LCA	LC/APC	LCA	LC/APC	DX	Duplex		P	PVC	2	2Mtr	
		5	50/125um	SC	SC/UPC	SC	SC/UPC	04	4 Core				3	3Mtr	
		53	OM3	SCA	SC/APC	SCA	SC/APC	12	12 Core				5	5Mtr	
		54	OM4	FC	FC/UPC	FC	FC/UPC	24	24 Core						Customized
					FC/APC	FCA	FC/APC	48	48 Core						
					ST/UPC	ST	ST/UPC	144	144 Core						

FIBER OPTIC PIGTAILS

OS2/OM2/OM3/OM4/OM5

Gorelink Fiber optic pigtail is a fiber optic cable terminated with a factory-installed connector on one end, leaving the other end terminated. Hence the connector side can be linked to equipment and the other side melted with optical fiber cables. They are utilized to terminate fiber optic cables via fusion or mechanical splicing. High-quality pigtail cables, coupled with correct fusion splicing practices offer the best performance possible for fiber optic cable terminations. They are usually used in fiber optic management equipment like ODF, fiber terminal box and distribution box. Various connectors are available.



Features

- ✓ Ideal for supporting high speed network connections and designed for gigabit Ethernet applications
- ✓ Complying with Telcordia ,GR-326-Core,IEC
- ✓ Low insertion loss and high return loss
- ✓ Polishing way: UPC,APC
- ✓ Fiber mode: OS2/OM1/OM2/OM3/OM4/OM5
- ✓ Connector :SC/LC/ST/FC/E2000/MTRJ etc
- ✓ Cable:0.9mm
- ✓ Fiber core: simplex or 12 colors
- ✓ Jacket: PVC or LSZH
- ✓ Choice of length and colors
- ✓ Operating Temperature: -20°C to +70°C
- ✓ RoHS Compliant



Ordering Information

P/N Coding: GL-P9LCSX9P-1

P/N	Product	Fiber Type	Connector End A	Cable Structure	Cable Diameter	Cable Jacket	Cable Length						
GL-PC	Patch cord	9	G.652D	LC	LC/UPC	SX	Simplex	9	0.9mm	P	PVC	1	1Mtr
		9/657A	G.657A	LCA	LC/APC	12	12 cores	2	2.0mm	L	LSZH	2	2Mtr
		5	50/125um	SC	SC/UPC			3	3Mtr				
		6	62.5/125um	SCA	SC/APC			5	5Mtr				
		53	OM3	FC	FC/UPC				Customized				
					FC/APC	FCA	FC/APC						
					ST/UPC	ST	ST/UPC						
					ST/APC	STA	ST/APC						
		54	OM4	FC	FC/APC								
					E2000/APC	E2A	E2000/APC						

FTTH DROP PATCH CORDS

Fiber optic drop patch cord is specialized for FTTH project, also named pre-terminated bow drop cable. In the center of the cable is the optical communication unit, with the two parallel non-metallic enhanced FRP/KFRP strength member, and surrounded with LSZH jacket to ensure strong tension and compressive resistance. It can be applied in Fiber to the home, manhole, building wiring and access terminal and drops



Application

- Complies with IEC 61754-4, IEC 60784-14 and TIA 604-3 A push-pull coupling mechanism for easy insertion and consistent connection
- FTTH access network
- Telecommunication Networks
- CCTV Networks
- Local Area Networks



Features

- Low Insertion loss and high return loss
- Small bending radius, excellent mechanical and environmental performance
- Fiber Mode: Singlemode G657A1/A2
- Polishing way: UPC/APC
- Connector : SC/LC/ST/FC
- Jacket: LSZH
- Choice of simplex, duplex, multicore
- Choice of length and colors
- Operating Temperature: -20° C to +70° C
- RoHS Compliant

Ordering Information

P/N Coding: GL-DPC9LCLCSX25P-1

P/N	Product	Fiber Type	Connector End A		Connector End B		Cable Structure		Cable Diameter		Cable Jacket		Cable Length			
GL-DPC	Drop Patch cord	9	G.652D	LC	LC/UPC	LC	LC/UPC	SX	Simplex	25	2.0*5.0mm	L	LSZH	1	1Mtr	
				9/657A	G.657A	LCA	LC/APC							LCA	LC/APC	DX
				SC	SC/UPC	SC	SC/UPC	4	4 core							Customized
				SCA	SC/APC	SCA	SC/APC									
				FC	FC/UPC	FC	FC/UPC									
				FCA	FC/APC	FCA	FC/APC									
				ST	ST/UPC	ST	ST/UPC									

FTTA CPRI PATCH CORDS

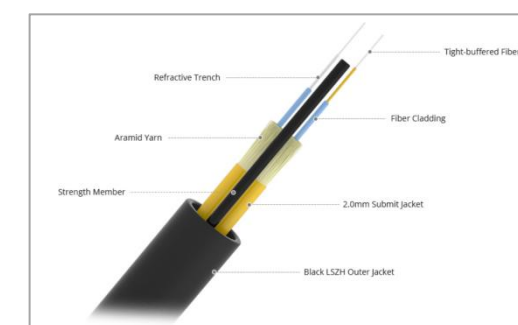
Application

- FTTH access network
- FTTA outdoor base station
- Access RRU to BBU connecting,
- 3G,4G LTE and distributed base station, and electric power communication system etc.



Features

- FTTA non-armored CPRI base station patch cord is assembled by 7.0mm LSZH black cable and breakout armored protection tube at both ends with fiber connectors.
- Low Insertion loss and high return loss
- Small bending radius, excellent mechanical and environmental performance
- The fan-out cable was protected by steel tube and the length is customized.
- Connector type: ST/LC/SC/FC
- Polishing way: UPC/APC
- Fiber Mode: OS2 / OM1 / OM2/OM3 / OM4
- Jacket: LSZH
- Choice of Simplex/Duplex/Multi-core
- Operating Temperature: -20°C to +70°C
- RoHS Compliant



Ordering Information

P/N Coding: GL-FPC9LCLCSX7L-1

P/N	Product	Fiber Type	Connector End A		Connector End B		Cable Structure		Cable Diameter		Cable Jacket		Cable Length			
GL-FPC	FTTA Patch cord	9	G.652D	LC	LC/UPC	LC	LC/UPC	SX	Simplex	7	7.0mm	L	LSZH	1	1Mtr	
				9/657A	G.657A	LCA	LC/APC							LCA	LC/APC	DX
				5	50/125um	SC	SC/UPC	SC	SC/UPC	04	4 Core			3	3Mtr	
				53	OM3	SCA	SC/APC	SCA	SC/APC					5	5Mtr	
				54	OM4	FC	FC/UPC	FC	FC/UPC							Customized
						FCA	FC/APC	FCA	FC/APC							
						ST	ST/UPC	ST	ST/UPC							

OUTDOOR FIBER OPTIC PIGTAILS

Gorelink Waterproof fiber pigtail is a kind of optical fiber assembly, which is equipped with a durable waterproof optical fiber connector at one end and an exposed optical fiber at the other end. It is designed for harsh environment applications. They are used to connect the main optical fiber lines and optical receivers in optical fiber communication systems. It has the characteristics of strong environmental adaptability, convenient installation, long service life, high tensile strength and good grounding. It can be configured with different connectors like SC,FC,ST,LC,SMA etc.



Features

- Ideal for supporting high speed network connections and designed for harsh environment application
- Reliable waterproof performance
- Anti-pull, corrosion resistance, good grounding
- Low insertion loss and high return loss
- Good interchangeability and good stability
- The waterproof connector can be tightened to avoid the cable and pigtail loss.
- Complying with Telcordia GR-326-Core, IEC Polishing way: UPC,APC
- Fiber mode: OS2/OM1/OM2/OM3/OM4/OM5
- Connector :SC/LC/ST/FC etc
- Fiber core: 2-24 cores
- Jacket: LSZH or PE
- Choice of length
- RoHS Compliant



ODVA Series Waterproof Connectors

Suitable for LC Duplex, SC Simplex & MPO
 IP67 Rated
 Cable for 5.0-7.0mm

TACTICAL FIBER CABLE REELS

Application

- Particularly designed for the quick and iterative distributing & retrieving under the circumstances of military field and harsh environment
- Nonmetal cable is light, portable, bendable, oil-resistant, rubbing-resistant, flame retardant, with high tensile, high crush resistance and wide operating temperature
- Can be used under the following situations: quick deployment and iterative distributing-retrieving of military field communication system; cable deployment of radar, aviation and naval vessel; complicated circumstances of oil field, mining, harbors, TV re-broadcasting, communication emergency repairing.



Features

- Particularly designed for the quick and iterative distributing & retrieving under the circumstances of military field and harsh environment
- Nonmetal cable is light, portable, bendable, oil-resistant, rubbing-resistant, flame retardant, with high tensile, high crush resistance and wide operating temperature
- Can be used under the following situations: quick deployment and iterative distributing-retrieving of military field communication system; cable deployment of radar, aviation and naval vessel; complicated circumstances of oil field, mining, harbors, TV re-broadcasting, communication emergency repairing.



P/N:GL-MB01-xxxx
 Cable:3.0mm-10.0mm
 N.W.:15KG
 Dimension:340*350*370mm
 Capacity:320m-3600m



P/N:GL-MB02-xxxx
 Cable:3.0mm-10.0mm
 N.W.:16.5KG
 Dimension:390*490*590mm
 Capacity:320m-3600m



P/N:GL-MB03-xxxx
 Cable:3.0mm-10.0mm
 N.W.:16.5KG
 Dimension:390*490*590mm
 Capacity:320m-3600m

* xxxx for cable length

FIBER OPTIC CONNECTORS

Application

- Telecommunication
- LAN & WAN
- Broadband
- CATV
- Network
- FTTX

Features

- Meets Telecordia-GR-326-CORE
- Low insertion loss
- Corrosion resistant body
- Precision mechanical dimension
- Ultra low back reflection
- Choice of 0.9mm, 2.0mm, 3.0mm boot
- Choice of Singlemode & Multimode
- Simplex & Duplex available
- SC/LC/FC/ST/MPO/E2000
- Choice of colors
- RoHS compliant



SC

LC

FC



ST

MPO

E2000



LC Uniboot Connectors



LC Uniboot Connector with switch

Ordering Information

P/N Coding: GL-CSCSM9BL

P/N	Product	Fiber Type	Fiber type	Boot	Color				
GL-C	Connector	SC	SC	SM	Singlemode	9	0.9mm	BL	Blue
GL-UC	Uniboot connector	SCA	SC/APC	MM	Multimode	2	2.0mm	BG	Beige
		LC	LC/UPC	53	OM3	3	3.0mm	GR	Green
		LCA	LC/APC	54	OM4			AQ	Aqua
		ST	ST/UPC					MG	Magenta
		FC	FC/UPC					BK	Black
		FCA	FC/APC						
		MPO	MPO/UPC						
		E2	E2000						

FIELD ASSEMBLY CONNECTORS

Application

Gorelink Field Assembly Optical fiber Connector is widely used in FTTx that does not need epoxy or polishing. It is very easy and fast to install for emergent installation, repair/replacement requirements on the site. It accommodates a reliable and durable optical network especially suitable for advanced fiber optic systems requiring exceptional stability and low loss.

Features

- ✓ Quick assembly connectors are reliable, cost-effective with quick, adhesive termination
- ✓ Available in multimode, and single-mode
- ✓ Most robust connection, ideal for indoor and outside plant applications
- ✓ Zirconia ceramic ferrules used on all connectors
- ✓ Unique tail clamping mechanism to ensure the tensile strength, security and stability
- ✓ Each connector type is color coded to the industry standard requirements to identify
- ✓ No polishing on the site



SC/UPC Fast Connector
P/N:GL-FIC-SCS



SC/APC Fast Connector
P/N:GL-FIC-SCAS



SC Pre-embedded Fast Connector
P/N:GL-FPC-SCAS



LC/UPC Pre-embedded Fast Connector
P/N:GL-FPC-LCS



LC/UPC Straight-through Fast Connector
P/N:GL-FSC-LCS



SC/APC Hot-melt Fast Connector
P/N:GL-FHC-SCAS



FC/UPC Hot-melt Fast Connector
P/N:GL-FHC-FCS



FC/APC Fast Connector
P/N:GL-FIC-FCAS

FIBER OPTIC ADAPTERS

Application

- Telecommunication
- LAN & WAN
- Broadband
- CATV
- Network
- FTTX

Features

- Designed to terminate or link the fiber optic cables or fiber optic connectors between two fiber optic lines.
- Meets Telecordia-GR-326-CORE
- Low insertion loss
- Precision mechanical dimension
- Choice of Singlemode&Multimode
- Simplex & Duplex available
- LC/SC/FC/ST available
- Choice of colors
- RoHS compliant



SC/UPC SM Simplex
P/N:GL-ASCS01



SC/APC SM Simplex
P/N:GL-ASCAS01



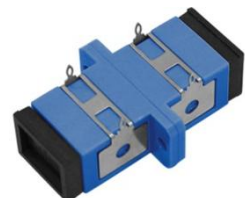
SC/APC SM Simplex Without flange
P/N:GL-ASCA02-S01



SC/UPC SM Duplex Metal
P/N:GL-ASCS02M



SC/APC SM Simplex PCB application
P/N:GL-ASCA04-S01



SC/UPC SM Simplex PCB Application
P/N:GL-ASC03-S01

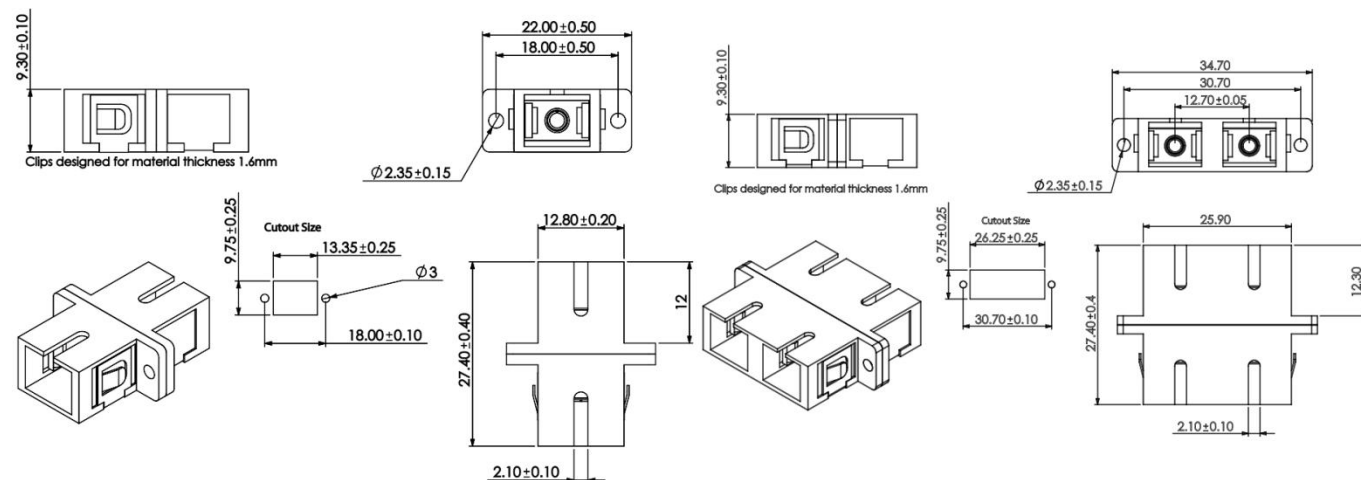


SC/APC SM Simplex Anti-laser
P/N:GL-ASCA05-S01



SC/APC SM Simplex Insert Jack
P/N:GL-ASCA06-S01

SC Adapter Drawing



FIBER OPTIC ADAPTERS

Application

- Telecommunication
- LAN & WAN
- Broadband
- CATV
- Network
- FTTX

Features

- Meets Telecordia-GR-326-CORE specifications
- Low insertion loss
- Precision mechanical dimension
- Simplex & Duplex available
- LC/SC/FC/ST available
- Choice of Singlemode&Multimode
- Choice of colors
- RoHS compliant



LC/UPC SM Duplex With flange
P/N:GL-ALC01-S02



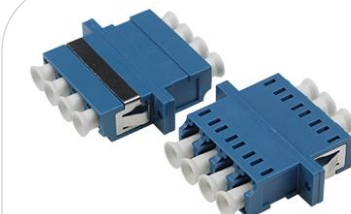
LC/UPC OM3 Duplex With flange
P/N:GL-ALC01-5302



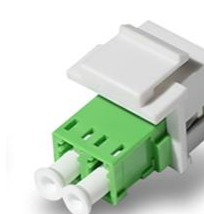
LC/UPC SM Simplex Without flange
P/N:GL-ALC02-S01



SC/APC SM Duplex Without flange
P/N:GL-ALCA02-S02



LC QUAD Adapters With flange
P/N:GL-ALC02-S04



LC/APC SM Duplex Insert Jack
P/N:GL-ALCA04-S02

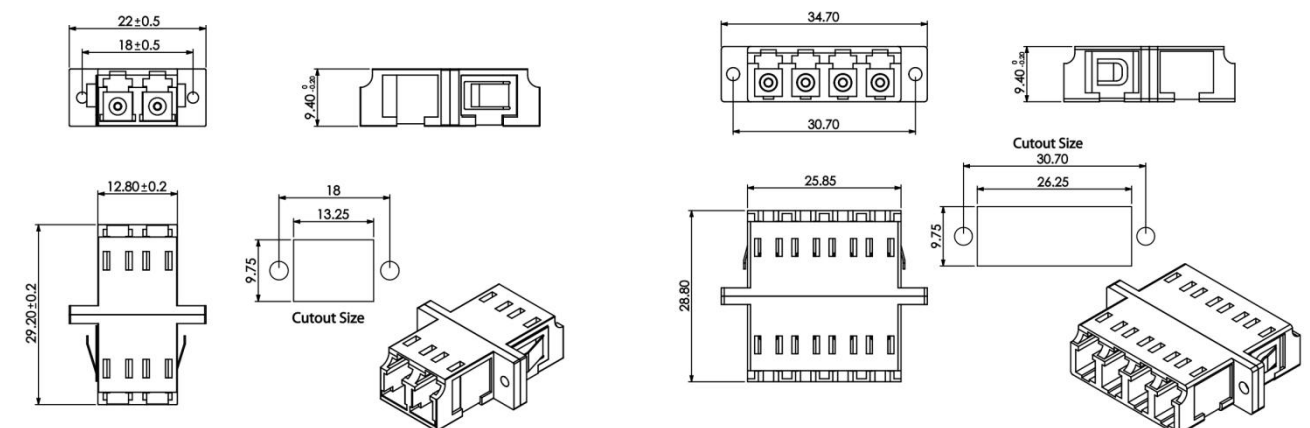


FC/UPC MM Simplex
P/N:GL-AFCM01



ST/UPC Simplex Adapter
P/N:GL-ASTS01

LC Adapter Drawing



FIBER OPTIC HYBRID ADAPTERS

Application

- Telecommunication
- LAN & WAN
- Broadband
- CATV
- Network
- FTTX

Features

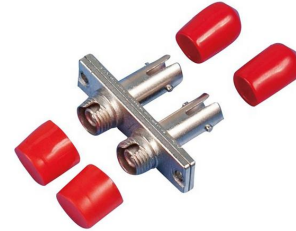
- Meets Telecordia-GR-326-CORE
- Low insertion loss
- Precision mechanical dimension
- Choice of Singlemode&Multimode
- Simplex & Duplex available
- Hybrid LC/SC/FC/ST available
- RoHS compliant



LC Female-FC Male
P/N:GL-ALCFCS01



SC Male-FC Male
P/N:GL-ASCFCS01



FC Male-ST Male
P/N:GL-AFCSTS02



E2000 Male-FC Male
P/N:GL-AE2FCS01



SC Bare fiber adapter
P/N:GL-BASCS01



LC Bare fiber adapter
P/N:GL-BALCS01



FC Male-LC Male
P/N:GL-AFCLCS01



SC/APC-LC/UPC
P/N:GL-ASCALCS01



SC Male-ST Male
P/N:GL-ASCSTS01

FIBER OPTIC ATTENUATORS

Gorelink Fiber optic attenuators is a passive device used to reduce the amplitude of a light signal without significantly changing the wave form itself by up to 30dB. . Our female to male fixed fiber optic attenuators offer low reflection, high mode stability and a variety of attenuation values.

The most commonly used type is female to male plug type fiber optic attenuator, it has the optical fiber connector at one side and the other side is a female type fiber optic adapter.It is available in SC/LC/ST/FC/MU etc from 1dB to 30dB.

Features

- ✓ Low insertion loss and good durability
- ✓ Good repeatability and changeability
- ✓ Excellent temperature stability
- ✓ Good Protection with Dust Cap
- ✓ High-power light source durability
- ✓ Wavelength independence
- ✓ Attenuation levels ranging from 1dB to 30dB
- ✓ 1310nm, 1550nm and 1310/1550nm dual wave lengths
- ✓ Choice of UPC or APC.



**SC/APC SM
Female to Male
1-30dB**
P/N:GL-FASCAxx



**SC/UPC SM
Female to Male
1-30dB**
P/N:GL-FASCxx



**LC/UPC SM
Female to Male
1-30dB**
P/N:GL-FALCxx



**LC/APC SM
Female to Male
1-30dB**
P/N:GL-FALCAxx



**FC/APC SM
Female to Male
1-30dB**
P/N:GL-FAFCAxx



**FC/UPC SM
Female to Male
1-30dB**
P/N:GL-FAFCxx



**ST/UPC SM
Female to Male
1-30dB**
P/N:GL-FASTxx



**MU/UPC SM
Female to Male
1-30dB**
P/N:GL-FAMUxx



**SC/UPC-ST/UPC SM
Various 1-30dB**
P/N:GL-FASCSTxx

* xx in P/N for attenuation dB 05 -5dB 10 -10dB



MPO/MTP SOLUTIONS

Gorelink MTP/MPO Trunk /Harness cable is designed for high-density fiber patching in data centers which need space saving and reduce cable management troubles with a cost-effective alternative to time-consuming field termination. It is optimized for 40G QSFP+ PLR4, 100G QSFP28 PSM4, 400G OSFP DR4/XDR4 and 400G QSFP-DD DR4/XDR4 optics direct connection and high-density data center applications. It can be used to interconnect cassettes, panels, or fan outs.

Features

- ✓ Meets IEC Standard IEC-61754-7; IEC61755, Telcordia GR-1435-CORE, JIS C5982; TIA-604-5(FOCIS5) compliant
- ✓ 10G Fiber Channel Compliant, 40G and 100G IEEE 802.3
- ✓ MPO Connector: Female (Pinless) / Male (Pin)
- ✓ Fiber Type: SM, MM, OM3, OM4
- ✓ Connector: MPO/LC/SC
- ✓ Capacity: 8F/12F/24F/72F/144F
- ✓ Cable: Mini-Distribution cables
- ✓ Jacket: Choice of LSZH/PVC/OFNR/OFNP
- ✓ Jacket OD: 2.0/3.0mm (within 24 cores)
- ✓ 40/100G Ethernet Distance: 150mtr@850nm
- ✓ 10G Ethernet distance: 400mtr@850nm
- ✓ Polarity: Method A/Method B/Method C
- ✓ Standard Insertion Loss: < 0.50 dB ,
- ✓ Return Loss (SM): > 60 dB
- ✓ Elite Insertion Loss: < 0.30 dB
- ✓ Installation Tensile Load: 100 N (445 lbs)
- ✓ Long-Term Tensile Load: 50 N (222 lbs)
- ✓ RoHS Compliant

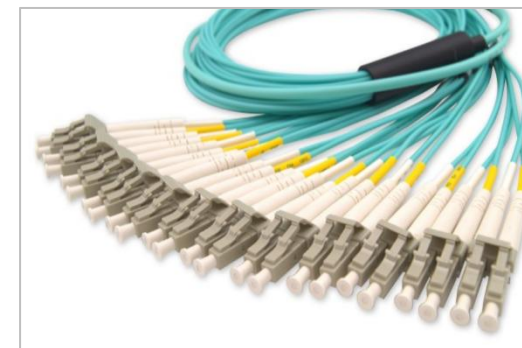
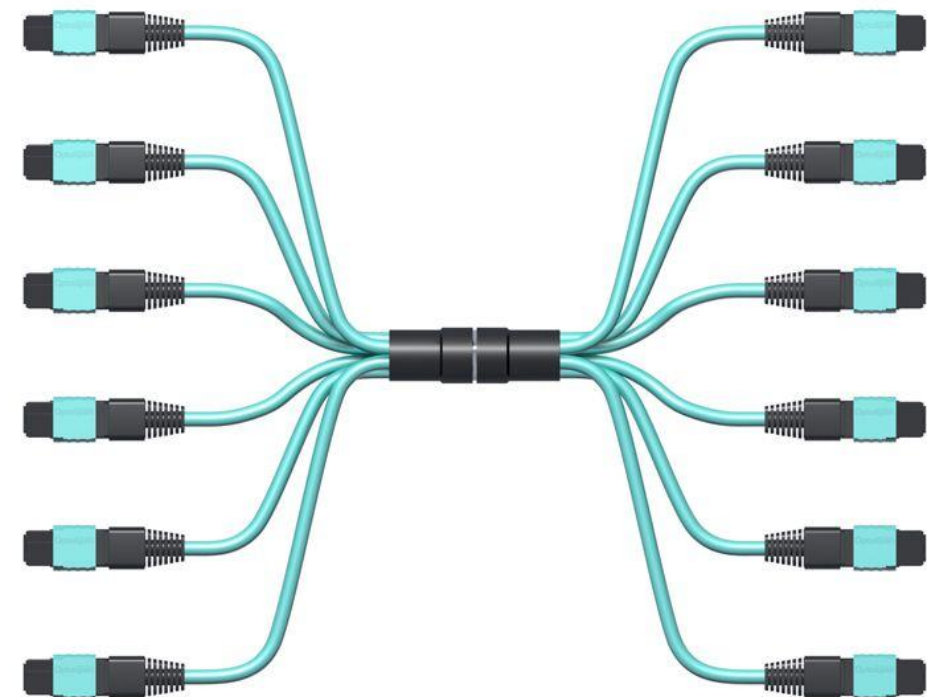


MPO Trunk cables



MPO Connectors

MPO/MTP TRUNK/HARNESS PATCH CABLES



Harness cables



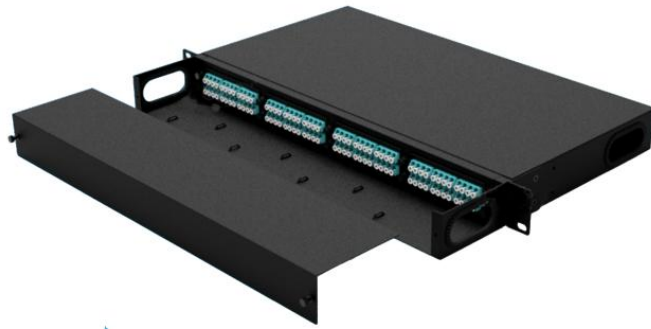
MPO Adapters

Ordering Information

P/N Coding: GL-PC9TFTF123L-1

P/N	Product	Fiber Type	Connector End A	Connector End B	Cable Capacity	Cable Diameter	Cable Jacket	Cable Length						
GL-PC	Patch cord	9	G.652D	TF	MTP Female	TF	MTP Female	8	8 Core	3.0mm	L	LSZH	1	1Mtr
		9/657A	G.657A	TM	MTP Male	TM	MTP Male	12	12 Core		P	PVC	2	2Mtr
		5	50/125um	MF	MPO Female	MF	MPO Female	24	24 Core		FR	OFNR	3	3Mtr
		53	OM3	MM	MPO Male	MM	MPO Male	72	72 Core		FP	OFNP	5	5Mtr
		54	OM4	FC	FC/UPC	FC	FC/UPC	144	144 Core					Customized
			LC	LC/UPC	LC	LC/UPC								
			SC	SC/UPC	SC	SC/UPC								

HIGH DENSITY MPO PATCH PANELS



1U 19" Rack Mounted MPO Patch Panel
4 Cassettes module
Up to 144 cores
Sliding rail design

24 core MPO Cassettes
 P/N:GL-MC06-24C

P/N:GL-MP06-48LC5302 48 core LC OM3 Duplex
 P/N:GL-MP06-96LC5302 96 core LC OM3 Duplex
 P/N:GL-MP06-144LC5304 144 core LC OM3 Quad

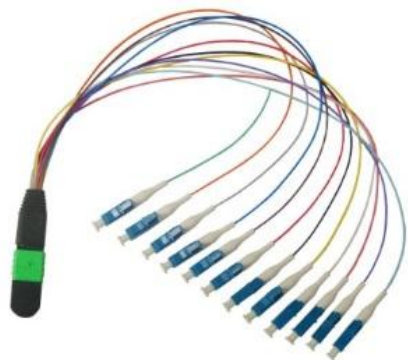


Ultra High density MPO Patch Panel
8 Cassettes module
Up to 144 cores
Angled design
 P/N:GL-MP04-xxxx



1U 19" Rack Mounted MPO Patch Panel
3 Cassettes module
Up to 108 cores

P/N:GL-MP05-48LC5302 48 core LC OM3 Duplex
 P/N:GL-MP05-96LC5302 96 core LC OM3 Duplex
 P/N:GL-MP06-108LC5304 108 core LC OM3 Quad



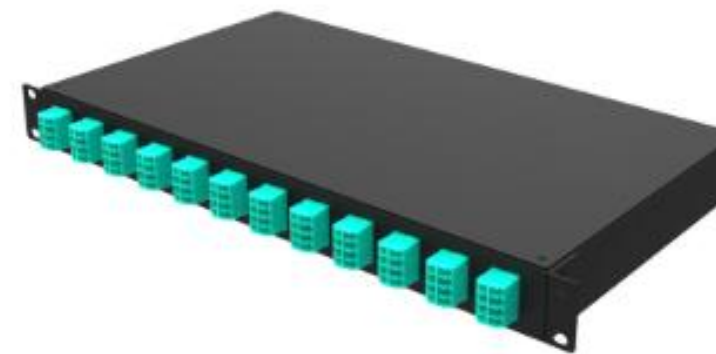
12 core MPO-LC Patch cables
 P/N:GL-9MFLC129L-1

HIGH DENSITY MPO PATCH PANELS

Gorelink 19" Rack mounted Ultra High Density MTP/MPO Patch Panel is specially designed to accommodate high density cabling in high end Data Center and Telecommunication central office environment. Front and rear cable management facilitates provides a neat and tidy solution for managing incoming and exiting cables with simple, flexible, effective and safe management. The capacity can be up to 144 cores



2U 19" Rack Mounted MPO Patch Panel
Available in SC/LC/MPO
Up to 72 cores
Drawer design
 P/N:GL-MP02-xxxx



1U 19" Rack Mounted MPO Patch Panel
Available in SC/LC/MPO
Up to 48 cores
 P/N:GL-MP01-xxxx



24 core MPO Cassettes
 P/N:GL-MC01-24C

Ordering Information

P/N Coding: GL-MP01-12LCS02P

P/N	Product	Type	Capacity	Adapter Type				Pigtail					
GL	MP	MPO Patch Panel	01	12	12 Port	LC	LC/PC	S	SM	02	Duplex	P	Pigtail
			02	24	24 Port			M	MM	04	Quad		
			04	48	48 Port			53	OM3				
			05	96	96 Port			54	OM4				
			06	108	108 Port								
				144	144 Port								

RACK MOUNT FIBER PATCH PANELS

Gorelink 19" Rack mounted Sliding Fiber Optic Patch Panel is made of high-quality cold-rolled steel sheet and electro-fused paint, it is designed to make the cable system simply and standardization with simple, flexible, effective and safe management.

Application

- ✓ Optic Access Network
- ✓ Local Area Network
- ✓ FTTH
- ✓ Telecommunication

Features

- ✓ Supplied with cable management & splice tray
- ✓ Removable Front Panel
- ✓ Choice of different capacity
- ✓ LC/SC/FC/ST port available



1U 19" Rack Mounted Patch Panel
Up to 48 cores
LC/SC port
Sliding rail design
P/N:GL-SPP04-xxxx



1U 19" Rack Mounted Patch Panel
LC/SC Port
Up to 48 cores
Drawer design
P/N:GL-DPP01-xxxx



1U 19" Rack Mounted Patch Panel
Up to 48 cores
LC/SC port
Sliding rail design
P/N:GL-SPP01-xxxx

RACK MOUNT FIBER PATCH PANELS



3U 19" Rack Mounted Patch Panel
SC/LC port
Up to 144 cores
Sliding rail design
P/N:GL-SPP02-xxxx

1U 19" Rack Mounted Fiber Patch Panel
SC/LC port
Up to 24 cores
Rotary design
P/N:GL-RPP01-xxxx



2U 19" Rack Mounted Fiber Patch Panel,
SC/LC port
Up to 48 cores
Top open design
P/N:GL-FPP02-xxxx



Ordering Information

P/N Coding: GL-SPP01-12LCS01P

P/N	Product	Capacity	Adapter Type						Pigtail			
GL	SPP01	Sliding rail type	12	12 Port	LC	LC/UPC	S	SM	01	Simplex	P	Pigtail
	SPP02	Sliding rail type	24	24 Port	LCA	LC/APC	M	MM	02	Duplex		
	SPP04	Sliding rail type	48	48 Port	SC	SC/UPC	53	OM3	04	Quad		
	DPP01	Drawer type	72	72 Port	SCA	SC/APC	54	OM4				
	RPP01	Rotary type	96	96 Port								
	FPP02	Top open type										

FIBER WALL MOUNTED BOXES

Gorelink Fiber Optic Wall Mount Box is universally used in telephone, agricultural telephone network system, data and image transmission system, CATV cable television series, indoor cable through force access and branch connection. It is available for the distribution and termination connection for various kinds of fiber optic systems, especially suitable for mini-network terminal distribution, in which the optical cables, patch cores or pigtails are connected.

Features

- ✓ Supplied with cable management & splice tray
- ✓ Removable Front Panel
- ✓ Choice of different capacity
- ✓ LC/SC/FC/ST port available



Indoor Wall Mounted Box
Single door
Suitable for LC/ST/FC/ST
Up to 96 cores
P/N:GL-WB03-xxxx



Indoor Wall Mounted Box
Double door
Suitable for LC/ST/FC/ST
Up to 48 cores
P/N:GL-WB02-xxxx

FIBER INTERCONNECTED CABINET



Outdoor Wall Mounted Box
Suitable for LC/ST/FC/ST
Up to 96 cores
Waterproof IP55/IP66 Rated
P/N:GL-WB01-xxxx



Outdoor Fiber Interconnected Cabinets
Up to 576 cores
Cold rolled steel
P/N:GL-FC03-576LC02



Outdoor Fiber Interconnected Cabinets
Up to 288 cores
Stainless steel
P/N:GL-FC02-288LC02

Ordering Information

P/N Coding: GL-WB01-12LCS01P

P/N	Product	Capacity	Adapter Type						Pigtail	
GL	WB01 WB02 WB03 Wall mounted box	12 12 Port	LC	LC/UPC	S	SM	01	Simplex	P	Pigtail
		24 24 Port	LCA	LC/APC	M	MM	02	Duplex		
		48 48 Port	SC	SC/UPC	53	OM3	04	Quad		
		72 72 Port	SCA	SC/APC	54	OM4				
		96 96 Port								

OPTICAL DISTRIBUTION FRAME

Gorelink Optical Distribution Frame (ODF) is a frame used to provide cable interconnections between communication facilities, which can integrate fiber splicing, fiber termination, fiber optic adapters & connectors and cable connections together in a single unit. It can also work as a protective device to protect fiber optic connections from damage. It is the most popular and comprehensive fiber optic distribution frame which can reduce the cost and increase the reliability and flexibility of fiber optic network during both deployment and maintenance.

Features

- ✓ Supplied with cable management & splice tray
- ✓ Removable Front Panel
- ✓ Choice of different capacity
- ✓ LC/SC/FC/ST port available



**Optical Distribution Frame
19" Rack mounted
With dust cover
Suitable for LC/ST/FC/ST
Up to 144 cores
P/N:GL-SR03-xxxx**



**Splice tray,12 Fibers
P/N:GL-ST03-12**

Ordering Information

P/N Coding: GL-SR03-12LCS01P

P/N	Product	Capacity	Adapter Type						Pigtail
GL	SR03 ODF with cover	12 12 Port	LC	LC/PC	S	SM	01	Simplex	P Pigtail
		24 24 Port	LCA	LC/APC	M	MM	02	Duplex	
		48 48 Port	SC	SC/UPC			04	Quad	
		72 48 Port	FC	FC/UPC					
		96 96 Port							
		144 144 Port							

OPTICAL DISTRIBUTION FRAME



**Optical Distribution Frame
19" Rack mounted
Without dust cover
Available for 1U/2U/3U
Suitable for LC/ST/FC/ST
Up to 72 cores
P/N:GL-SR02-xxxx**



**Optical Distribution Frame
19" Rack mounted
Removable adapter plate
Suitable for LC/ST/FC/ST
Up to 144 cores
P/N:GL-SR01-xxxxGY**



**Optical Distribution Frame
19" Rack mounted
Removable adapter plate
Suitable for LC/ST/FC/ST
Up to 144 cores
P/N:GL-SR01-xxxxBK**



**Splice tray,24Fibers
P/N:GL-ST01-24**

Ordering Information

P/N Coding: GL-SR01-12LCS01P

P/N	Product	Capacity	Adapter Type						Pigtail
GL	SR01 ODF with cable manager	12 12 Port	LC	LC/PC	S	SM	01	Simplex	P Pigtail
		24 24 Port	LCA	LC/APC	M	MM	02	Duplex	
	SR02 ODF without cover	48 48 Port	SC	SC/UPC			04	Quad	
		72 48 Port	FC	FC/UPC					
		96 96 Port							
		144 144 Port							

FTTH TERMINAL BOXES

Gorelink FTTH termination box (FTB), known as optical termination box (OTB) as well, is a compact fiber management product of small size. It is widely adopted in FTTx cabling for both fiber cabling and cable management. It is used for splicing and termination between indoor fiber optic cable and pigtails with SC or LC duplex type.

It is designed to the increasing amount of Passive Optical LAN and FTTX applications such as Fiber to the Home or Fiber to the Desk, requiring the high speed connections provided by Optical Fiber. It can provide the flexibility by having a number of options, coming either unloaded, with simplex or duplex adapters.

Features

- ✓ Small size and light weight for easy installation
- ✓ Adapter available: SC,ST,FC,LC
- ✓ Suitable for wall, floor or desk mounting
- ✓ Material: high density ABS
- ✓ LC/SC/FC/ST port available



FTTH Terminal Box
Suitable for LC/ST/FC/ST
Up to 2 cores
P/N:GL-FTB05-2SCAS01



FTTH Terminal Box
Suitable for LC/ST/FC/ST
Up to 2 cores
P/N:GL-FTB04-2SCAS01



FTTH Terminal Box
Suitable for LC/ST/FC/ST
Up to 2 cores
P/N:GL-FTB10-2SCAS01



FTTH Terminal Box
Suitable for LC/ST/FC/ST
Up to 2 cores
P/N:GL-FTB06-2LCAS02

FTTH TERMINAL BOXES



Fiber Wall Plate
86X86mm
Suitable for LC/SC
Up to 4 cores LC Quad
P/N:GL-FWP01-4LCS04



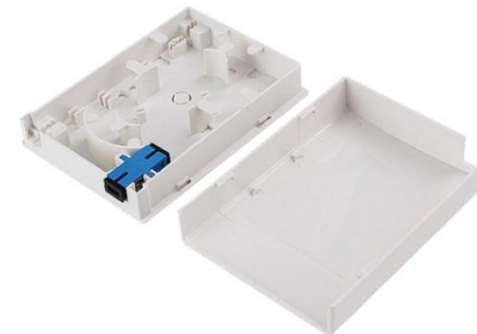
Fiber Angle Wall Plate
86X86mm
Suitable for LC/SC
Up to 4 cores LC Duplex
P/N:GL-FWP02-2SCAS01



FTTH Terminal Box
Suitable for LC/ST/FC/ST
Up to 2 cores
P/N:GL-FTB07-2SCS01



FTTH Terminal Box
Suitable for LC/ST/FC/ST
Up to 2 cores
P/N:GL-FTB08-2SCS01



FTTH Terminal Box
Suitable for LC/ST/FC/ST
Up to 2 cores
P/N:GL-FTB09-2SCS01



FTTH Terminal Box
Suitable for LC/ST/FC/ST
Up to 8 cores
P/N:GL-FTB02-8LCS02

FIBER OPTIC TERMINAL BOXES



DIN Rail Fiber Terminal Box
Suitable for LC/SC
Up to 24 cores

P/N:GL-DTB01-4SCS01 4 core SC Port SM Simplex
P/N:GL-DTB01-8SCS01 8 core SC Port SM Simplex
P/N:GL-DTB01-12SCS01 12 core SC Port SM Simplex
P/N:GL-DTB01-24LCS02 24 core LC Port SM Duplex



DIN Rail Fiber Terminal Box
Suitable for LC/ST/FC/ST
Up to 2 cores
Plastic

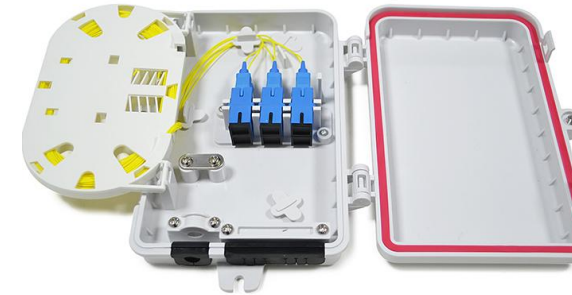
P/N:GL-DTB01-4SCS01 4 core SC Port SM Simplex
P/N:GL-DTB01-8SCS01 8 core SC Port SM Simplex
P/N:GL-DTB01-12SCS01 12 core SC Port SM Simplex
P/N:GL-DTB01-24LCS02 24 core LC Port SM Duplex



Fiber Terminal Box, LC/SC
Up to 12 cores
Metal

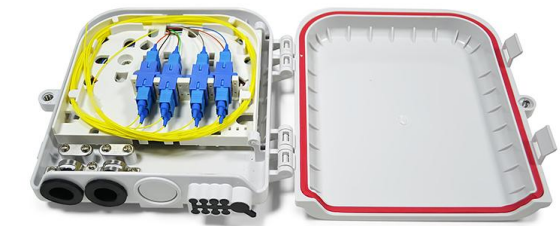
P/N:GL-FTB01-4SCS01 4 core SC Port SM Simplex
P/N:GL-FTB01-8SCS01 8 core SC Port SM Simplex
P/N:GL-FTB01-12SCS01 12 core SC Port SM Simplex

FIBER OPTIC DISTRIBUTION BOXES



Outdoor Fiber Terminal Box
Suitable for LC/SC
Simplex/Duplex
Up to 12 cores

P/N:GL-FTB11-6SCS01 6 Core SC SM Simplex
P/N:GL-FTB11-12LCS02 12 Core LC SM Duplex



Outdoor Fiber Terminal Box
Suitable for LC/SC
Simplex/Duplex
Up to 12 cores

P/N:GL-FDB04-8SCS01 8Core SC SM Simplex
P/N:GL-FDB04-12LCS02 12 Core LC SM Duplex



Outdoor Fiber Distribution Box
Suitable for 1x4,1x8 Splitter
Up to 8 cores

P/N:GL-FDB01-14SC 1x4 Splitter
P/N:GL-FDB01-18SC 1x8 Splitter



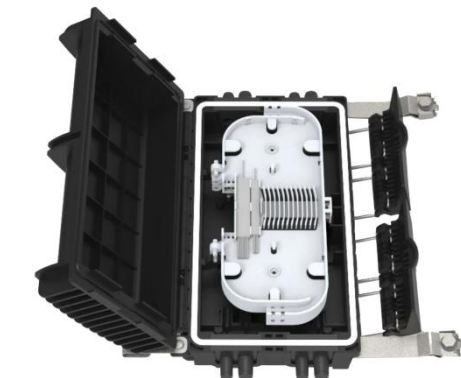
Outdoor Fiber Distribution Box
Suitable for 1x16 Splitter
Up to 16 cores

P/N:GL-FDB02-16SC 16 Core SC/APC SM Simplex



Outdoor Fiber Distribution Box
Suitable for LC/SC
Up to 2 cores

P/N:GL-FDB03-24SCAS01
24 Core SC/APC SM Simplex



Outdoor Fiber Splice Box
Suitable for LC/SC
Up to 24 cores

P/N:GL-FDB07-24SCS01
24 Core SC/APC SM Simplex

FIBER OPTICAL SPLICE CLOSURES



P/N	GL-FOSC-D05
Capacity	Up to 144 core
Sealing	Mechanical



P/N	GL-FOSC-D03
Capacity	Up to 96 core
Sealing	Mechanical



P/N	GL-FOSC-SD02
Capacity	Up to 96 core
Sealing	Heat shrinkable



P/N	GL-FOSC-D01
Capacity	Up to 96 core
Sealing	Mechanical



P/N	GL-FOSC-D17
Capacity	Up to 96 core
Sealing	Mechanical



P/N	GL-FOSC-SD02
Capacity	Up to 96 core
Sealing	Heat shrinkable



P/N	GL-FOSC-D08
Capacity	Up to 144 core
Sealing	Mechanical

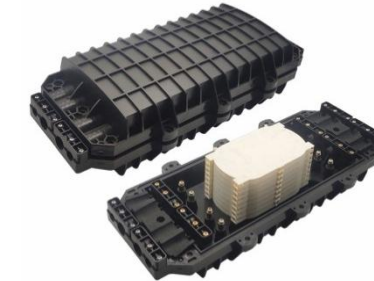


P/N	GL-FOSC-D19
Capacity	Up to 288 core
Sealing	Mechanical

FIBER OPTICAL SPLICE CLOSURE



P/N	GL-FOSC-H11xx
Capacity	Up to 144 core
Sealing	Heat shrinkable



P/N	GL-FOSC-H10xx
Capacity	Up to 192 core
Sealing	Heat shrinkable



P/N	GL-FOSC-H12xx
Capacity	Up to 72 core
Sealing	Heat shrinkable



P/N	GL-FOSC-M01xx
Capacity	Up to 96 core
Sealing	Mechanical



P/N	GL-FOSC-M02xx
Capacity	Up to 96 core
Sealing	Heat shrinkable



P/N	GL-FOSC-H09xx
Capacity	Up to 48 core
Sealing	Heat shrinkable



P/N	GL-FOSC-H18
Capacity	Up to 96 core
Sealing	Heat shrinkable



P/N	GL-FOSC-H19
Capacity	Up to 48 core
Sealing	Mechanical



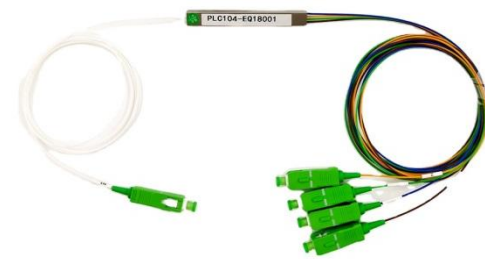
P/N	GL-FOSC-H14xx
Capacity	Up to 48 core
Sealing	Heat shrinkable

BLOCKLESS PLC SPLITTERS

Gorelink Mini PLC splitter (Planar light wave circuit) is a type of optical power management device that is fabricated using silica optical waveguide technology to distribute optical signals from Central Office (CO) to multiple premise locations.

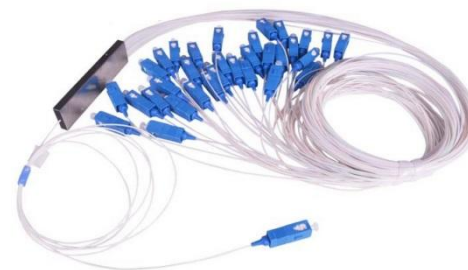
It has stronger fiber protection than bare fiber splitter, which is a miniaturization result of cassette splitter. It's mainly used for various connection and distribution boxes or network cabinets. It is widely used in PON networks to realize optical signal power management.

It can be 1x2,1x4,1x8,1x16,1x32,1x64. Choice of different connectors.



Mini PLC Splitter
1x4 SC/APC SM
P/N:GL-MP-14979SCAxx

*xx - length



Mini PLC Splitter
1x32 SC/APC SM

P/N:GL-MP-132979SCxx

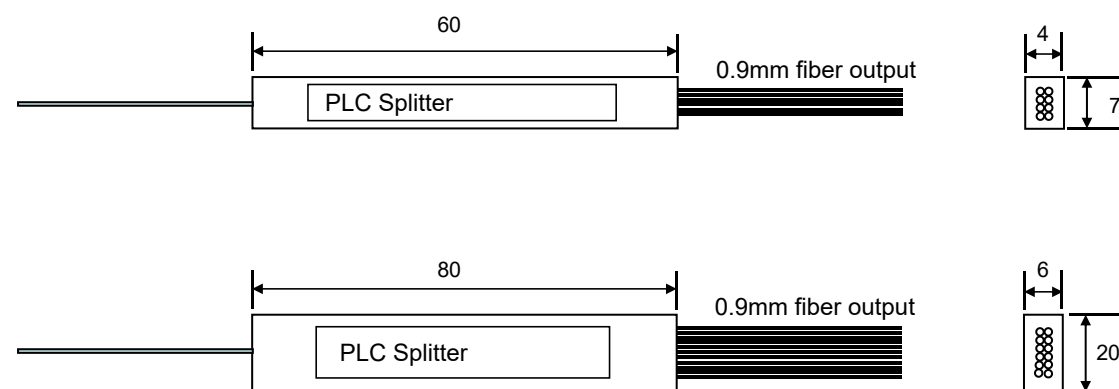
* xx - length

* SCA - SC/APC connector available

Features

- ✓ Low insertion loss
- ✓ Low Polarization Dependent Loss
- ✓ Excellent Environmental Stability
- ✓ Excellent Mechanical Stability

Drawing



PLC SPLITTERS



Bare PLC Splitter
P/N:GL-BP-xxxx

*xxxx - length



ABS Module PLC Splitter
Up to 64 cores

P/N:GL-AP12-972SC-xx 1x2 Splitter SC/UPC 2.0mm 1mtr
P/N:GL-AP14-972SC-xx 1x4 Splitter SC/UPC 2.0mm 1mtr
P/N:GL-AP18-972SC-xx 1x8 Splitter SC/UPC 2.0mm 1mtr
P/N:GL-AP116-972SC-xx 1x16 Splitter SC/UPC 2.0mm 1mtr
P/N:GL-AP132-972SC-xx 1x32 Splitter SC/UPC 2.0mm 1mtr
P/N:GL-AP164-972SC-xx 1x64 Splitter SC/UPC 2.0mm 1mtr

* SCA - SC/APC connector as option



LGX Box PLC Splitter
Up to 16 cores

P/N:GL-LP-18SC 1x8 splitter SC/UPC
P/N:GL-LP-116SC 1x16 splitter SC/UPC
P/N:GL-LP-18SCA 1x8 splitter SC/APC
P/N:GL-LP-116SCA 1x16 splitter SC/APC



1U 19" Rack Mounted Patch Panel for PLC Splitter,32 PORT
P/N:GL-PPS01



FIBER OPTICAL TOOLS



Fiber Optic cable Stripper
P/N:GTB2032

Features

- For stripping 250micron buffer coating
- Second hole for stripping 2.0mm-3.0mm fiber jacket Pre-set at the factory&no need adjustments
- Length: 6.5"(165mm)
- Weight: 119g
- Lock to hold tool closed when it is not in use



Fiber Optic cable Stripper
P/N: GTB2034

Features

- It is used for stripping the jacket of round cable
- It can strip the cable in diameter:
- 0.127mm, 0.254mm, 2.0-2.4mm,2.0-3.0mm, 2.8-3.0mm Pre-set at the factory&no adjustments needed
- Will not scratch or nick glass fiber



Fiber Optic Kevlar Scissor
P/N:GTB2031

Features

- It is used for cutting cable kevlar



Fiber Visual Fault Locator,10km
P/N:GTA1041

Features

- Specially designed for fiber tracing,routing & continuity checking
- Operates either in CW or Pulsed
- Lower Battery warning
- Long battery life (up to 60 hours)
- Crash-proof and dust-proof design for laser head
- Burning testing to ensure the reliability.
- Portable and rugged
- Central Wavelength: 650nm+10nm
- Pulse Frequency: 2~3MHz
- Output power: 1mw,3mw,10mw
- Connector type: FC/PC
- Operating Temperature: -10 - 80 degree

FIBER OPTICAL TOOLS



Fiber Connector Clean Box
P/N: GTB2044

Features

- It is a elegant fiber connector clean box
- Suitable for SC/LC/FC/ST Connector
- Cleaning times: 500times above
- The cleaning belt can be changed



Fiber Optic Clean Pen
P/N: GTB2041



Features

- Suitable for 2.5mm adapters and ferrules
- Can clean SC/ST/FC
- Cleaning times: over 800 times
- Easy to operate



Fiber Optic Clean Pen
P/N: GTB2042

Features

- Suitable for 1.25mm adapters and ferrules
- Can clean MU/LC
- Cleaning times: over 800 times
- Easy to operate



Fiber Optic Launch Cable Box
P/N: GTA1052

Features

- Designed to aid in the testing of fiber optic cable when using an OTDR.
- It is used with Optical Time Domain Reflect meters (OTDR's) to help minimize the effects of the OTDR's launch pulse on measurement uncertainty.
- Connector type: SC, LC, ST, FC etc
- Box Material: SR Polypropylene
- Length: From 100m to 4KM
- Reflection(RL) < -55 DB
- Operating temperature -40° C to +80° C

* xx – cable Length



Features

- Integrated design, smart and rugged
- IP65 protection level, outdoor enhanced
- 7-inch anti-reflection LCD screen
- PON online test module (1625nm) is optional
- Support multi-language display and input
- 7 inch TFT-LCD with LED backlight
- 1×RJ45 port, 3×USB port (USB 2.0, Type A USB×2, Type B USB×1)
- Single mode: 100m, 500m, 2km, 5km, 10km, 20km, 40km, 80km, 120km, 160km,

OTDR
P/N: GTA200-S1



Features

- 7s fast fusion splicing, 18s highly efficient heating.
- 320 times image magnification, 5mm fusion splicing for fibers of ultra-short cutting length
- 300 groups of fusion splicing modes, 100 groups of heating modes
- 10000 groups of fusion records, 64 images storage
- Ceramic presser foot, ceramic V-block, all-in-one fixture
- Dual-direction splicing, automatic splicing, intelligent pyro condensation
- Dimension: 120(W)*120(D)*130(H)mm
- Package:43*32.5*26.5cm
- Weight: 1.22KG

Fiber Fusion Splicer
P/N:GTA100

* Please inquiry us for more models



Fiber Cleaver
P/N:GTB2051



Fiber Cleaver
P/N:GTB2052



Fiber optic Identifier
P/N:GTA1057



Fiber Fusion Splice Toolkits
P/N: GTB2053



Fiber Clean Toolkits
P/N: GTB2054



Features

- It is a handheld optical light source, designed for the fiber optical network installation, acceptance, and maintenance
- Wave ID information can be transmitted when used with Optical Power Meter
- Tone generation, 270HZ,330HZ,1KHZ,2KHZ
- Operating Wavelength:850/1300/1310/1550nm
- It can be used for SM&MM cable
- Output power can be adjustable
- Intelligent backlight control (light intensity can be adjusted properly according to ambient light, which greatly reduced power consumption)
- AA alkaline and AC adapter for power supply
- Low battery indication
- Dimension&Weight:175*90*44.5mm(255g)

Fiber Optic Light Source
P/N: GTB2055



Features

- Wave ID—Automatic wavelength identification and switching
- Frequency ID/Tone detection---Automatic frequency identification
- Intelligent backlight control (light intensity can be adjusted properly according to ambient light, which greatly reduced power consumption)
- Data storage function, up to 1000 test records
- USB communication port for saved testing records download
- Reference power level can be set up and stored
- Auto-off function can be activated or deactivated.
- AA alkaline and AC adapter for power supply
- Low battery indication
- Calibrated wavelength:850/1300/1310/1490/1550nm
- Dimension&Weight:180*90*45mm(250g)

Fiber Power Meter
P/N: GTB2055